

# OVA COLLECTION

## SECTIONAL SOFA middle element

by YAAZ lab + angelettiruzza design | 2021



Item code: Ova.78ov  
(Ova.78ov.s10.r2.bsf43.ssf43)

### Collection

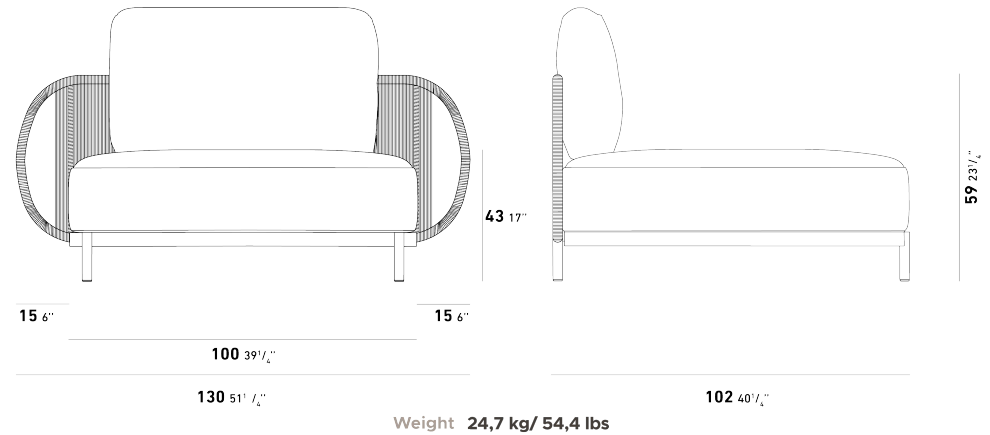
OVA is a modular seating system that furnishes the outdoor space of the home as a natural extension of the interior.

Comfort, beauty, and modularity combined with the solidity and quality of the materials used make OVA an outdoor collection that can be inserted into any public or private environment.

### Product Dimension

cm / inch

cm / inch



### Product Details

#### ALUMINUM

Most Popular Metal

[more detail visit pg.2](#)



OLIVE GREEN

Aluminum is a light weight and strong metal with an excellent strength-to-weight ratio and corrosion resistance. These properties make it an ideal material for outdoor furniture. Although aluminum is the most popular material for outdoor furniture, despite being light weight, it is durable and can be easily processed into various complex shapes.

#### FABRIC

100 % Sunbrella Acrylic

[more detail visit pg.3](#)



HERITAGE MOSS

Sunbrella® acrylic fabrics are considered premium for outdoor textiles. Sunbrella® is long-lasting compared to its counterparts and therefore provides long-term savings. If you especially care about UV protection, the best choice would be Sunbrella® products.

#### ROPE

Colorful

[more detail visit pg.5](#)



1003

Thanks to the additives and special pigments used in production, with high protection against sun and weather conditions, high color fastness and high strength are the main parts of our YAAZ synthetic rope bands collection.

# OVA COLLECTION

## SECTIONAL SOFA middle element

by YAAZ lab + angelettiruzza design | 2021

### ALUMINUM

Aluminum is a light weight and strong metal with an excellent strength-to-weight ratio and corrosion resistance. These properties make it an ideal material for outdoor furniture. Although aluminum is the most popular material for outdoor furniture, despite being light weight, it is durable and can be easily processed into various complex shapes. While it is extremely weather-resistant on its own, it is recommended to be coated with polyester electrostatic powder for added protection against the elements and scratches, as well as to add color to the product. Since the electrostatic powder paint adheres better to the metal, it also makes the product much more resistant to fading. As with other metals, aluminum can warm up or cool down depending on weather conditions, so it is recommended to use it with a cushion for comfort.

### Cleaning and Using Instructions

For regular cleaning, wipe the aluminum furniture with a soft cloth or sponge and a mild detergent solution.

To remove any stains or grime buildup, use a non-abrasive cleaner and a soft-bristled brush.

Avoid using steel wool or abrasive cleaners, as these can scratch the surface of the aluminum.

Rinse the furniture thoroughly with clean water and wipe it dry with a clean, dry cloth.

For extra protection, apply a coat of car wax to the aluminum surface. This will help to protect the furniture from the elements and keep it looking new.

Do not place heavy objects on the aluminum furniture, as this can cause dents or damage to the surface.

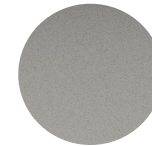
Avoid dragging the furniture on rough or uneven surfaces, as this can scratch the aluminum.

Do not expose the furniture to extreme weather conditions, such as heavy rain or extreme heat. If possible, store the furniture indoors or under a protective cover when not in use.

If the furniture becomes hot in direct sunlight, allow it to cool down before using it.

By following these cleaning and usage instructions, you can help ensure that your aluminum furniture stays in good condition for many years to come.

### ALUMINUM COLOR OPTIONS



Agate Grey



Beige Grey



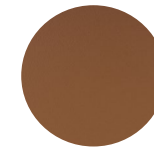
Beige Pink



Black



Cement Grey



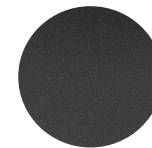
Copper Brown



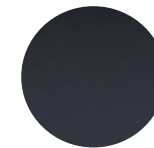
Dark Beige



Terra Brown



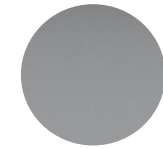
Graphite Grey



Grey Blue



Light Beige



Tele Grey



Moss Grey



Olive Green



Oyster White



Pastel Turquoise



Red Brown

# OVA COLLECTION

## SECTIONAL SOFA middle element

by YAAZ lab + angelettiruzza design | 2021

## SUNBRELLA FABRICS

Outdoor fabrics made from acrylic fibers are strong. It is more resistant to both weather conditions and usage errors such as mold, friction and tearing. This is especially important for outdoor flooring in active residential and commercial applications. Before weaving, acrylic fabric threads are dyed with the solution. This allows the fabric to retain its color longer, even when exposed to direct sunlight. In addition to its water repellency, acrylic fabrics are more breathable than other options and allow the fabric to stay cooler in hot weather. It is also easy to clean with soap and water.

So, Acrylic fabrics are a multi-purpose textile product that should be preferred in outdoor furniture. Sunbrella acrylic fabrics are considered premium for outdoor textiles. Sunbrella is long-lasting compared to its counterparts and therefore provides long-term savings. If you especially care about UV protection, the best choice would be Sunbrella products.

### Cleaning and Using Instructions

Brush off any loose dirt or debris from the surface of the fabric using a soft-bristled brush.

Apply a solution of water and mild soap to the fabric with a sponge or soft cloth.

Gently scrub the fabric in a circular motion, taking care not to rub too hard.

Rinse the fabric thoroughly with clean water, ensuring that all soap residue is removed.

Allow the fabric to air dry completely before use.

Machine wash the fabric in cold water using a mild detergent on a gentle cycle.

Do not use bleach or fabric softeners, as these can damage the fabric and affect its water-resistant properties.

If ironing is necessary, use a low heat setting and a pressing cloth to avoid direct contact with the fabric.

Avoid exposing the fabric to prolonged periods of direct sunlight, as this can cause fading and damage to the fabric.

Protect the fabric from harsh weather conditions, such as rain, snow, and extreme temperatures, by covering it with YAAZ covers or storing it indoors when not in use.

Avoid using harsh chemicals, bleach, or fabric softeners, as these can damage the fabric and affect its water-resistant properties.

If the fabric becomes wet, allow it to air dry completely before use to prevent mold and mildew growth.

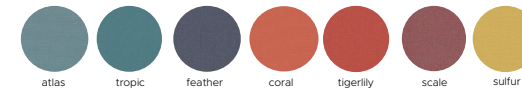
Regularly inspect the fabric for any signs of damage or wear, such as tears or fraying, and address any issues promptly to prevent further damage.

## SUNBRELLA FABRICS COLOR OPTIONS

### NATTE



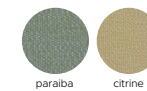
### MEZZO



### SAVANE



### MAJESTIC



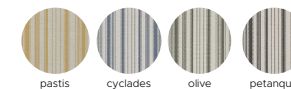
### RELAX



### HERITAGE



### FOUTAH



### SOLIDS



# OVA COLLECTION

## SECTIONAL SOFA middle element

by YAAZ lab + angelettiruzza design | 2021

### YAAZ FABRICS

Overall, water proof solution fabrics are an excellent choice for outdoor use because they offer protection from water damage and other environmental factors. They are durable, long-lasting, and easy to maintain, making them a practical and functional solution for outdoor furniture, and other outdoor items.

#### Cleaning and Using Instructions

Brush off any loose dirt or debris from the surface of the fabric using a soft-bristled brush.

Apply a solution of water and mild soap to the fabric with a sponge or soft cloth.

Gently scrub the fabric in a circular motion, taking care not to rub too hard.

Rinse the fabric thoroughly with clean water, ensuring that all soap residue is removed.

Allow the fabric to air dry completely before use.

Machine wash the fabric in cold water using a mild detergent on a gentle cycle.

Do not use bleach or fabric softeners, as these can damage the fabric and affect its water-resistant properties.

If ironing is necessary, use a low heat setting and a pressing cloth to avoid direct contact with the fabric.

Avoid exposing the fabric to prolonged periods of direct sunlight, as this can cause fading and damage to the fabric.

Protect the fabric from harsh weather conditions, such as rain, snow, and extreme temperatures, by covering it or storing it indoors when not in use.

Avoid using harsh chemicals, bleach, or fabric softeners, as these can damage the fabric and affect its water-resistant properties.

If the fabric becomes wet, allow it to air dry completely before use to prevent mold and mildew growth.

Regularly inspect the fabric for any signs of damage or wear, such as tears or fraying, and address any issues promptly to prevent further damage.

### YAAZ FABRICS COLOR OPTIONS

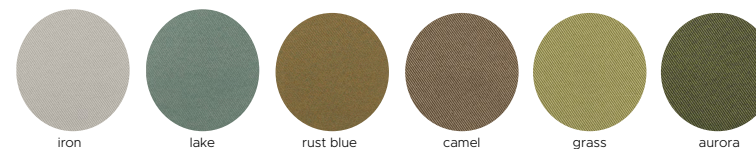
#### RIA



#### AKS



#### RAYAS



# OVA COLLECTION

## SECTIONAL SOFA middle element

by YAAZ lab + angelettiruzza design | 2021

### YAAZ ROPES

We have created a vibrant collection using our YAAZ synthetic outdoor weaving yarns.

With the use of additives and special pigments during production, the yarns in our YAAZ synthetic rope band collection provide high protection against sun and weather conditions, as well as exceptional color fastness and strength.

Our design team has carefully selected and produced a color palette that can be easily combined with our aluminum frame colors. YAAZ synthetic rope band colors will give a brand-new atmosphere to rope accessories that are popular in outdoor furniture worldwide.

### Cleaning and Using Instructions

Dust the rope furniture regularly with a soft cloth or a soft-bristled brush to remove any loose dirt or debris.

For deeper cleaning, use a solution of mild soap and warm water. Gently scrub the rope with a soft-bristled brush, then rinse thoroughly with clean water.

Avoid using harsh chemicals or abrasive cleaners, as these can damage the rope and cause discoloration or fading.

Allow the furniture to dry completely before using it again.

Do not exceed the weight capacity of the furniture. Check the weight limit specified by the manufacturer and avoid placing heavy objects on the furniture.

Avoid dragging or scraping the furniture on hard surfaces, as this can damage the rope and the frame.

Do not use the furniture in extreme weather conditions, such as heavy rain or high winds.

If possible, store the furniture indoors or under a protective YAAZ cover when not in use to extend its lifespan.

### YAAZ ROPES COLOR OPTIONS

