

KORU COLLECTION

TABLE

by Raffaella Mangiarotti | 2025



Item code: Koru.33.70
(Koru.33.s08.cr3)

Collection

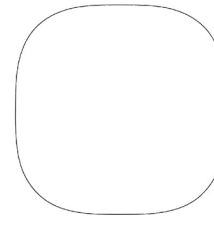
The collection is inspired by vintage wrought-iron garden chairs, where slender metal rods traced elegant decorative patterns.

These light and ethereal shapes gain solidity through delicate intersections, giving life to a series of seats with enveloping and welcoming forms. The airy structures are made even more inviting by soft outdoor cushions, which add warmth and comfort to the metal's rigor.

Each piece invites relaxation, transforming outdoor spaces into havens of well-being and conviviality.

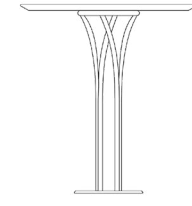
Product Dimension

cm / inch



70 27 1/4"

cm / inch



75 29 1/2"

Weight 14,5 kg / 32 lbs

Product Details

ALUMINIUM

Most Popular Metal

[more detail visit pg.2](#)



DARK BEIGE

Aluminum is a light weight and strong metal with an excellent strength-to-weight ratio and corrosion resistance. These properties make it an ideal material for outdoor furniture. Although aluminum is the most popular material for outdoor furniture, despite being light weight, it is durable and can be easily processed into various complex shapes.

NATURAL CERAMIC

Natural Elegance

[more detail visit pg.3](#)



CORAIL BLANC

Natural Ceramic is opaque and has a tactile quality. This surface has a slightly burnished look that makes it soft and inviting. Careful selection of high-quality raw materials creates a surface with delicate color effects and an extraordinary illusion of depth.

KORU COLLECTION

TABLE

by Raffaella Mangiarotti | 2025

ALUMINUM

Aluminium is a light and strong metal with excellent strength-to-weight ratio and corrosion resistance. These properties make it an ideal material for outdoor furniture. Despite its light weight, aluminium is durable and is coated with polyester electrostatic powder coating for added protection against knocks and scratches and to add colour to the product. As the powder coating adheres better to the metal, it also makes the product much more resistant to fading. JOTUN and Akzo Nobel branded powder coatings are used in YAAZ aluminium products.

ALUMINUM COATING

JOTUN powder coatings used in YAAZ products have been tested against high amounts of UV radiation and strong winds. In addition, powder coatings have been tested in some of the hottest, most humid and corrosive environments in the world, such as Southeast Asia and the Middle East.

CONCRETE COATING

The stone effect paint collection, developed with the cement spraying method, offers a great alternative for aesthetic surfaces in outdoor products.

Cleaning and Using Instructions

Over time with exposure to the elements, powder coatings may show signs of weathering such as loss of gloss, chalking and slight colour change. A simple regular clean will minimize the effects of weathering and will remove dirt, grime and other build-up detrimental to all powder coatings.

For any particular region or territory, there may be local regulations or local requirements to be met in order to achieve conformance to certain published quality labels or standards. It is the users' responsibility to be aware of such standards.

Failure to comply with the recommended cleaning schedule will nullify any warranties.

Cleaning should start at the time the products are installed, ensuring that construction materials such as concrete, plaster and paint splashes are removed before they have a chance to dry. Failure to remove these materials at this early stage will require the use of aggressive cleaning materials and techniques with potential damage to the powder coated surface.

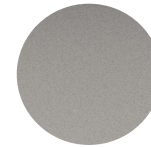
Best cleaned by regularly washing the coating using warm water and a non-abrasive, pH neutral detergent solution. Surfaces should be rinsed thoroughly after cleaning to remove all residue. All surfaces should be cleaned using a soft cloth or sponge or something harder than a soft natural bristle brush.

If the project is subject to any hazardous unusual environmental factors, or is close to salt water, an estuary or marine environments then YAAZ must be consulted on an individual project basis.

Renovation can be required in the case of heavy soiling (due to lack of maintenance).

In no circumstance should any abrasive cleaner or polish, or any cleaner containing ketones, esters be used.

ALUMINUM COLOR OPTIONS



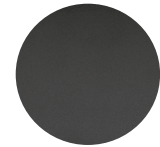
Agate Grey



Beige Grey



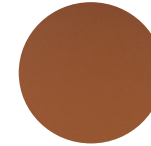
Beige Pink



Black



Cement Grey



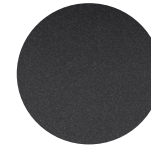
Copper Brown



Dark Beige



Pastel Turquoise



Graphite Grey



Grey Blue



Light Beige



Oyster White



Moss Grey



Olive Green



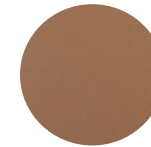
Red Brown



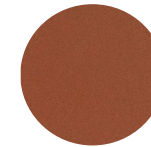
Tele Grey



Terra Brown



Toffee



Bronza



Crema

KORU COLLECTION

TABLE

by Raffaella Mangiarotti | 2025

NATURAL CERAMIC

Natural Ceramic is opaque and has a tactile quality. This surface has a slightly burnished look that makes it soft and inviting. Careful selection of high-quality raw materials creates a surface with delicate color effects and an extraordinary illusion of depth.

POWERFUL ACTION

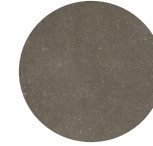
Eliminates microbes and prevents their reproduction 24 hours a day, with and without sunlight, providing always-active protection.

Thanks to the technology permanently integrated into the product, it offers eternal effectiveness. The reinforcing fiberglass mesh adds extraordinary resistance. Highly eco-friendly, it uses less raw materials, resulting in lower water and energy consumption and reduced CO2 emissions.

Cleaning and Using Instructions

Use warm water and a high-quality microfibre cloth. If needed, use warm water with a very diluted neutral detergent (one cap in 5 litres of water). When finished, always rinse with water and a clean microfibre cloth.

NATURAL CERAMIC COLOR OPTIONS



Cendre



Corail Blanc