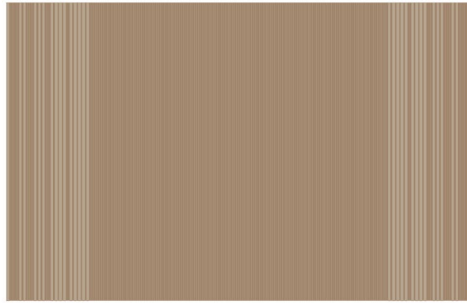


YUNN COLLECTION

CARPET mod.2



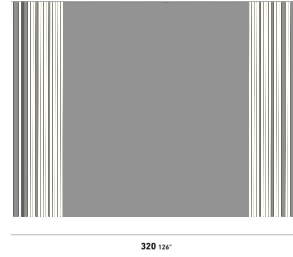
Item code: Yunn.52.mod2
(Yunn.52.r21.r20)

Collection

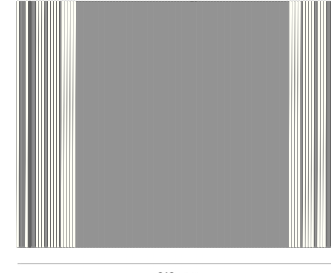
The newly added yarns to YAAZ colors are chip dyed. Due to the chip dying, there will be no problem of contaminating wastewater.

Additionally, since it is a textured yarn, water usage is not an issue in this process. All these features make these yarns very sustainable, with almost no water used in production.

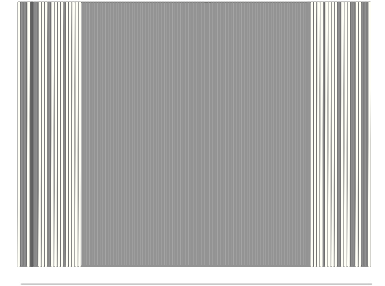
Product Dimension



240 94 1/2"



230 90 1/2"



300 118"

Product Details

ROPE (BASE)

[more detail visit pg.2](#)



D903035

Thanks to the additives and special pigments used in production, with high protection against sun and weather conditions, high color fastness and high strength are the main parts of our YAAZ synthetic rope bands collection.

ROPE (LINE)

[more detail visit pg.2](#)



D903033

Thanks to the additives and special pigments used in production, with high protection against sun and weather conditions, high color fastness and high strength are the main parts of our YAAZ synthetic rope bands collection.

YUNN COLLECTION

CARPET mod.2

YAAZ ROPES

We have created a vibrant collection using our YAAZ synthetic outdoor weaving yarns.

With the use of additives and special pigments during production, the yarns in our YAAZ synthetic rope band collection provide high protection against sun and weather conditions, as well as exceptional color fastness and strength.

Our design team has carefully selected and produced a color palette that can be easily combined with our aluminum frame colors. YAAZ synthetic rope band colors will give a brand-new atmosphere to rope accessories that are popular in outdoor furniture worldwide.

The newly added yarns to YAAZ colors are chip dyed. Due to the chip dyeing, there will be no problem of contaminating wastewater.

Additionally, since it is a textured yarn, water usage is not an issue in this process. All these features make these yarns very sustainable, with almost no water used in production.

Cleaning and Using Instructions

Dust the rope furniture regularly with a soft cloth or a soft-bristled brush to remove any loose dirt or debris.

For deeper cleaning, use a solution of mild soap and warm water. Gently scrub the rope with a soft-bristled brush, then rinse thoroughly with clean water.

Avoid using harsh chemicals or abrasive cleaners, as these can damage the rope and cause discoloration or fading.

Allow the furniture to dry completely before using it again.

Do not exceed the weight capacity of the furniture. Check the weight limit specified by the manufacturer and avoid placing heavy objects on the furniture.

Avoid dragging or scraping the furniture on hard surfaces, as this can damage the rope and the frame.

Do not use the furniture in extreme weather conditions, such as heavy rain or high winds.

If possible, store the furniture indoors or under a protective YAAZ cover when not in use to extend its lifespan.

YAAZ ROPES COLOR OPTIONS



D802000



D903033



D903035



D903035