

OVA COLLECTION

COFFEE TABLE

by YAAZ lab + angelettiruzza design | 2021



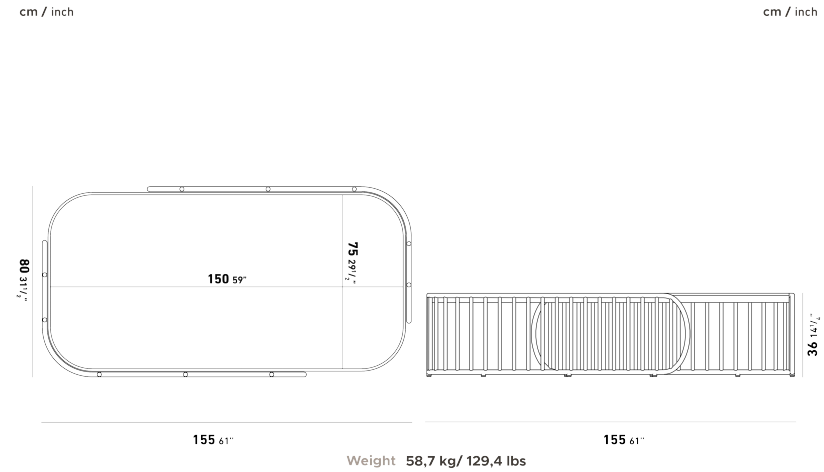
Item code: Ova.32
(Ova.32.s10.z10)

Collection

OVA is a modular seating system that furnishes the outdoor space of the home as a natural extension of the interior.

Comfort, beauty, and modularity combined with the solidity and quality of the materials used make OVA an outdoor collection that can be inserted into any public or private environment.

Product Dimension



Product Details

ALUMINUM

Most Popular Metal

[more detail visit pg.2](#)



OLIVE GREEN

Aluminum is a light weight and strong metal with an excellent strength-to- weight ratio and corrosion resistance. These properties make it an ideal material for outdoor furniture. Although aluminum is the most popular material for outdoor furniture, despite being light weight, it is durable and can be easily processed into various complex shapes.

Z-PACT

Decorative High Pressure Laminate

[more detail visit pg.3](#)



117

Zero-HPL, which is reinforced with pine or ganic polymer(lignin), has a stylish appearance and is extremely hard. Thanks to these superior properties, Zero-HPL is ideal for outdoor applications.

OVA COLLECTION

COFFEE TABLE

by YAAZ lab + angelettiruzza design | 2021

ALUMINUM

Aluminum is a light weight and strong metal with an excellent strength-to-weight ratio and corrosion resistance. These properties make it an ideal material for outdoor furniture. Although aluminum is the most popular material for outdoor furniture, despite being light weight, it is durable and can be easily processed into various complex shapes. While it is extremely weather-resistant on its own, it is recommended to be coated with polyester electrostatic powder for added protection against the elements and scratches, as well as to add color to the product. Since the electrostatic powder paint adheres better to the metal, it also makes the product much more resistant to fading. As with other metals, aluminum can warm up or cool down depending on weather conditions, so it is recommended to use it with a cushion for comfort.

Cleaning and Using Instructions

For regular cleaning, wipe the aluminum furniture with a soft cloth or sponge and a mild detergent solution.

To remove any stains or grime buildup, use a non-abrasive cleaner and a soft-bristled brush.

Avoid using steel wool or abrasive cleaners, as these can scratch the surface of the aluminum.

Rinse the furniture thoroughly with clean water and wipe it dry with a clean, dry cloth.

For extra protection, apply a coat of car wax to the aluminum surface. This will help to protect the furniture from the elements and keep it looking new.

Do not place heavy objects on the aluminum furniture, as this can cause dents or damage to the surface.

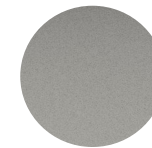
Avoid dragging the furniture on rough or uneven surfaces, as this can scratch the aluminum.

Do not expose the furniture to extreme weather conditions, such as heavy rain or extreme heat. If possible, store the furniture indoors or under a protective cover when not in use.

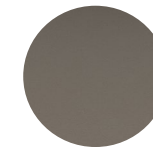
If the furniture becomes hot in direct sunlight, allow it to cool down before using it.

By following these cleaning and usage instructions, you can help ensure that your aluminum furniture stays in good condition for many years to come.

ALUMINUM COLOR OPTIONS



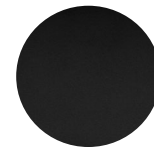
Agate Grey



Beige Grey



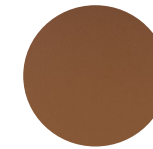
Beige Pink



Black



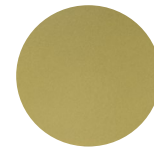
Cement Grey



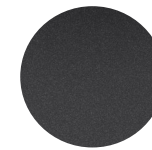
Copper Brown



Dark Beige



Gold



Graphite Grey



Grey Blue



Light Beige



Light Copper



Moss Grey



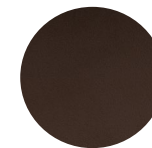
Olive Green



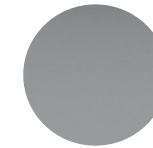
Oyster White



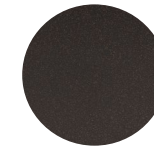
Pastel Turquoise



Red Brown



Tele Grey



Terra Brown

OVA COLLECTION

COFFEE TABLE

by YAAZ lab + angelettiruzza design | 2021

Z-PACT

Superior features of Z-Pact surface technology;

Non-finger printing surface

Soft-touch ultra-matte finish

Low light reflection due to ultra-color density

Easy to clean

Resistance to house hold and laboratory chemicals

Anti-bacterial properties for safe food contact

High heat resistance and temperature/cold resistance

Long-lasting durability thanks to micro-scratch, impact and abrasion resistance, thermal healing repair, flame retardant, and water repellent properties

Zero-HPL, which is reinforced with pine or ganic polymer(lignin), has a stylish appearance and is extremely hard.

Thanks to these superior properties, Zero-HPL is ideal for outdoor applications.

Lignin is a complex organic polymer that builds up in the cell walls of many plants, making them hard and woody.

Cleaning and Using Instructions

Simply using a damp cloth is enough to clean our compact products.

Cleaning materials with chemicals can cause the surface polish to wear off over time and reduce its protective effect.

Avoid exposing the furniture to extreme temperatures, such as direct sunlight or freezing temperatures.

Do not use abrasive materials or harsh chemicals when cleaning the furniture, as they can damage the compact surface.

To prevent scratches or chips, avoid dragging heavy objects across the surface of the furniture.

Consider covering with YAAZ cover, the furniture during prolonged periods of non-use, such as during the winter months or when you are away on vacation.

Regularly inspect the furniture for any signs of damage or wear, and address any issues promptly to prevent further damage.

Z-PACT COLOR OPTIONS

