

YAAZ

MARINE
collection





Nature is our greatest home and a timeless source of inspiration not just for its visual beauty but also as a philosophical approach to life.

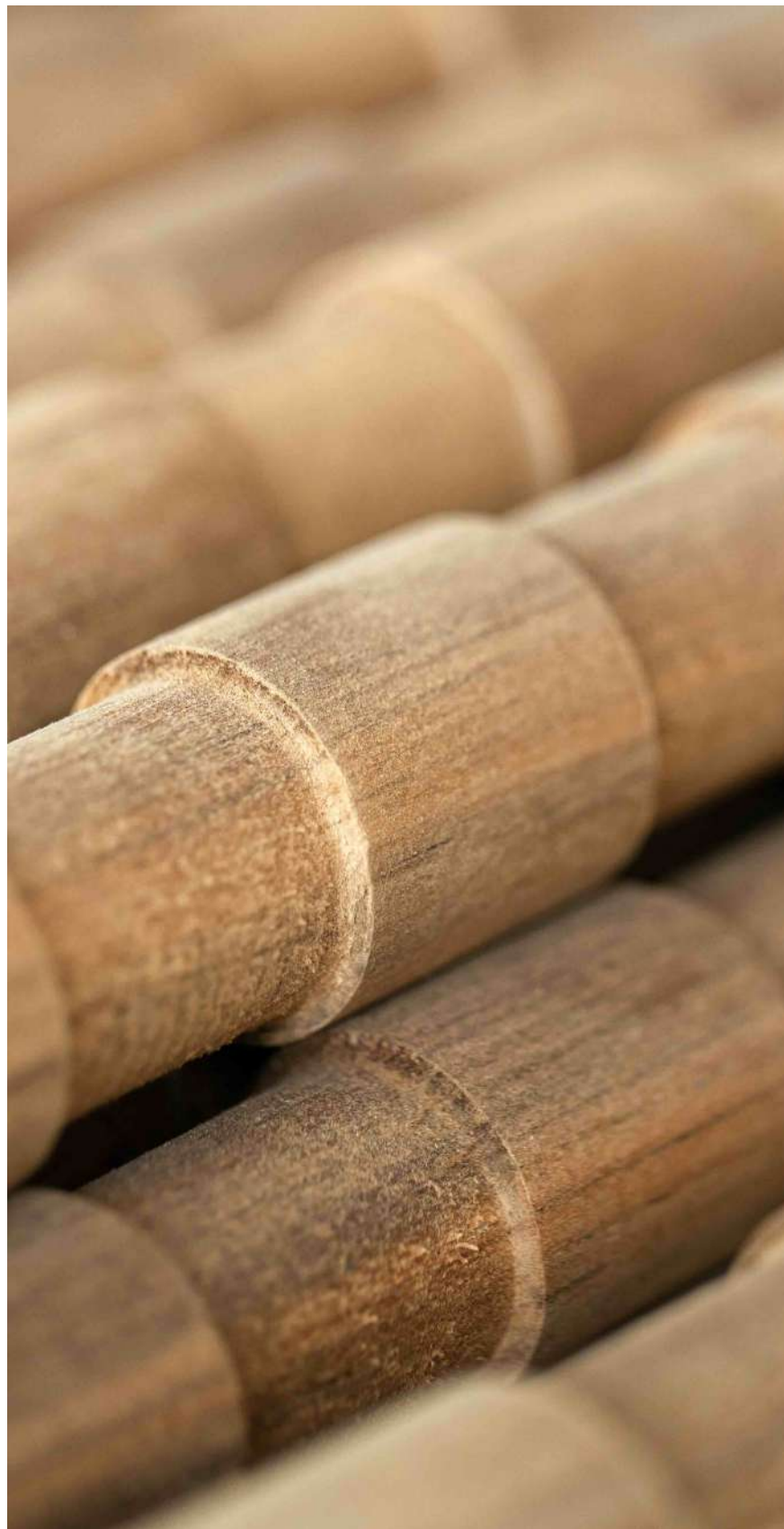
UZ collection

by angelettiruzza design

The UZ collection fits naturally into any environment. Well- balanced, aesthetically pleasing, and rich in character, UZ is a furniture collection that thrives both indoors and outdoors, thanks to the richness of the materials used and the timeless quality of its design.

Inspired by the geometric form of a cylinder, which has been cleverly interpreted and adapted in height and diameter to meet the functional and structural needs of the collection, each piece emanates a dynamic and strong presence.

At the same time, it maintains an elegant, modern aesthetic that can easily integrate into any context.





DESIGNER

angelettiruzza design

"Real life inspires our work every day. We've designed objects we'd like to have in our homes: solid, tangible objects that function well, but above all, are beautiful... endowed with a gentle essentiality, products with a soul that exude a sense of harmony, of tranquility, of peace."



UZ

sunbed



UZ sunbed

by angelettiruzza design

With the UZ sun lounger, on-deck relaxation becomes effortless. Its refined teak structure and practical design suit the marine environment, while the adjustable backrest reveals a hidden storage rim ideal for towels and personal items—keeping everything organized even in open-air conditions.





UZ

double sunbed





UZ daybed

by angelettiruzza design

The clean, softly contoured shapes are complemented by a removable cushion with internal padding made of Foam Dry.

The purity of a timeless, elegant, and refined design is balanced with the practicality and durability required of an outdoor furnishing accessory.



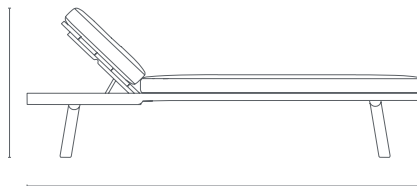
UZ daybed



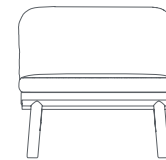
DIMENSIONS



82 / 32¹/₄



206 / 81



43 / 17

82 / 32¹/₄

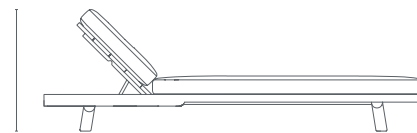
DIMENSIONS

product cm / inch: w. 82 / 32¹/₄ d. 206 / 81 h. 43 / 17
weight: 59,6 kg / 131,4 lbs

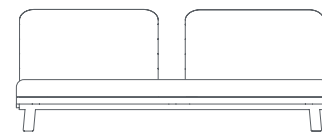
MATERIAL: Teak, Fabric, Foam



82 / 32¹/₄



207 / 81¹/₂



35 / 13³/₄

185 / 72³/₄

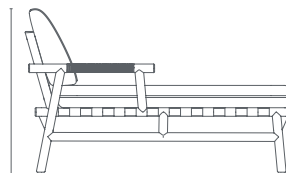
DIMENSIONS

product cm / inch: w. 185 / 72³/₄ d. 207 / 81¹/₂ h. 35 / 13³/₄
weight: 125 kg / 275,6 lbs

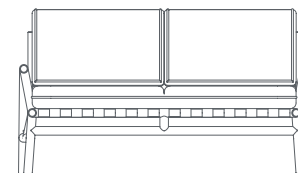
MATERIAL: Teak, Fabric, Foam



88 / 34³/₄



141 / 55¹/₂



47 / 18¹/₂

155 / 61

DIMENSIONS

product cm / inch: w. 155 / 61 d. 141 / 55¹/₂ h. 88 / 34³/₄
weight: 45 kg / 99,2 lbs

MATERIAL: Teak, Rope - 18 colors available, Band - 4 colors available, Fabric, Foam

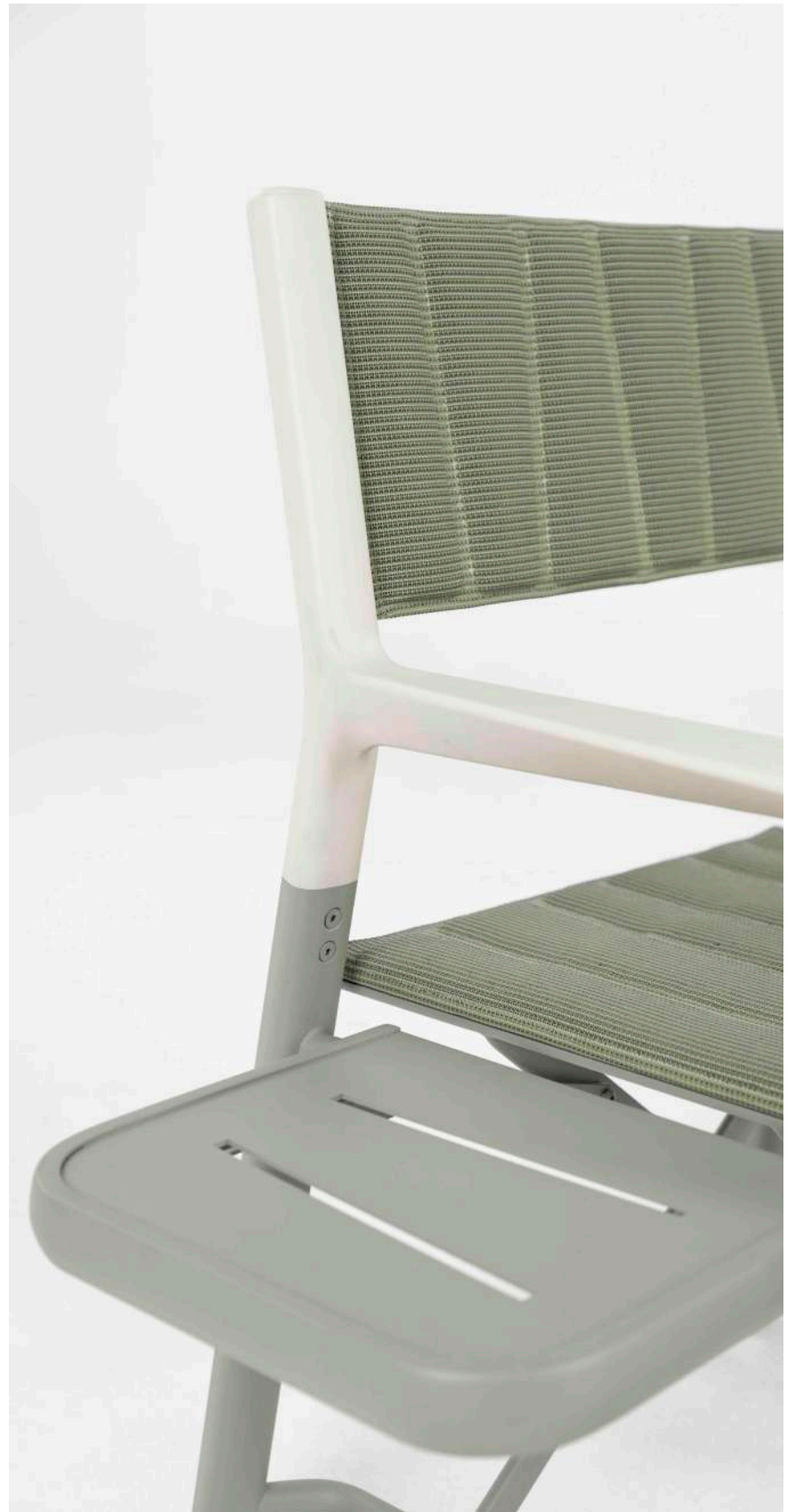


DEDIM collection

by Michael Graves Design

Made from aluminum, this product evokes the refined and charming holiday destinations of a bygone era.

The legs and the armrests are each triangular in section, with flared armrests for enhanced comfort. The seating section, composed of quilted and padded bands, presents a textured visual display, while the seat back is created by weaving technical fabrics of Serge Ferrari brand.





DEDIM chair

by Michael Graves Design

The collection perfectly balances aesthetics, functionality, and wellbeing. Made of die-cast aluminum and Serge Ferrari technical fabric, it is ideal for marine environments.

Its practical, functional table and Michael Graves Design-inspired accessories enhance both comfort and style, making it a visually striking and highly usable piece for outdoor and onboard settings.





DESIGNER

MICHAEL GRAVES design

YAAZ asked us to design a great outdoor chair, and the brief we received was: Could we design something that reflected Michael Graves' design heritage, but also aligned with the YAAZ brand's outdoor lifestyle?

That's where we started; everything was very clear.



DEDIM

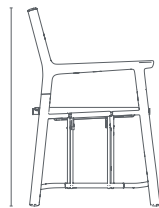
chair canopy



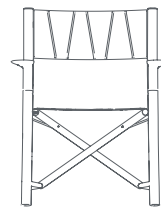
DIMENSIONS



87 / 34¹/₄



58 / 22⁵/₁₆



69 / 27¹/₁₆

45 / 17⁵/₁₇

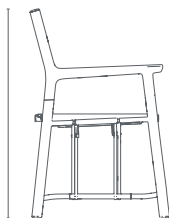
DIMENSIONS

product cm / inch: w. 69 / 27¹/₁₆ d. 58 / 22⁵/₁₆ h. 87 / 34¹/₄
weight: 15,4 kg / 34 lbs

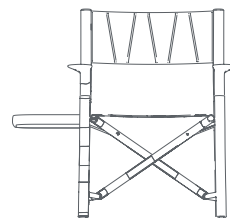
MATERIAL: Aluminum- 20 colors available, SF Sling*
*only Serge Ferrari sling fabric is used - 4 colors available



87 / 34¹/₄



58 / 22⁵/₁₆



90 / 35³/₁₇

45 / 17⁵/₁₇

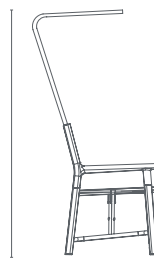
DIMENSIONS

product cm / inch: w. 90 / 35³/₁₇ (table is open) d. 58 / 22⁵/₁₆ h. 87 / 34¹/₄
weight: 18 kg / 39,7 lbs

MATERIAL: Aluminum- 20 colors available, SF Sling*
*only Serge Ferrari sling fabric is used - 4 colors available



145 / 57¹/₉



79,5 / 31²/₁₇



74 / 29¹/₈



94 / 37

40 / 15³/₄

DIMENSIONS

product cm / inch: w. 94 / 37 (table is open) d. 79,5 / 31²/₁₇ h. 145 / 57¹/₉
weight: 20,2 kg / 44,5 lbs

MATERIAL: Aluminum- 21 colors available, SF Sling*
*only Serge Ferrari sling fabric is used - 4 colors available



SAYE collection

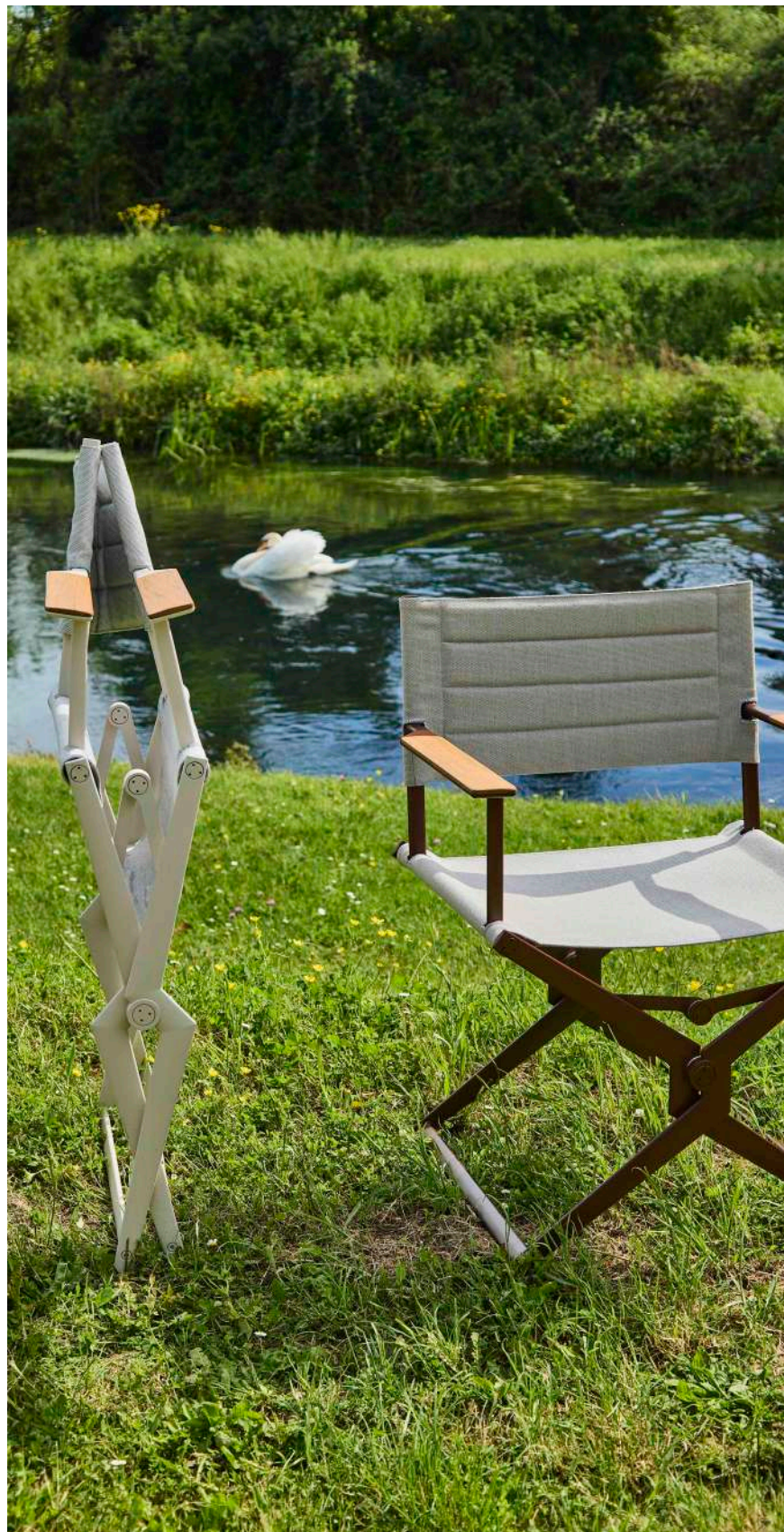
by angelettiruzza design

Quality of materials, workmanship, and shape for a timeless chair. SAYE is a contemporary reinterpretation of the classic folding director's chair.

It is comfortable, solid, functional, and beautiful, with a structure made of die-cast aluminum.

This material and technology ensure exceptional outdoor performance, such as lightness, resistance to the elements, and sturdiness. YAAZ offers its original interpretation of this space-saving product, which is a true status symbol with an illustrious and ancient history.

SAYE has original teak inserts on the armrests that make prolonged use comfortable.





DESIGNER

angelettiruzza design

"Real life inspires our work every day. We've designed objects we'd like to have in our homes: solid, tangible objects that function well, but above all, are beautiful... endowed with a gentle essentiality, products with a soul that exude a sense of harmony, of tranquility, of peace."



SAYE

chair

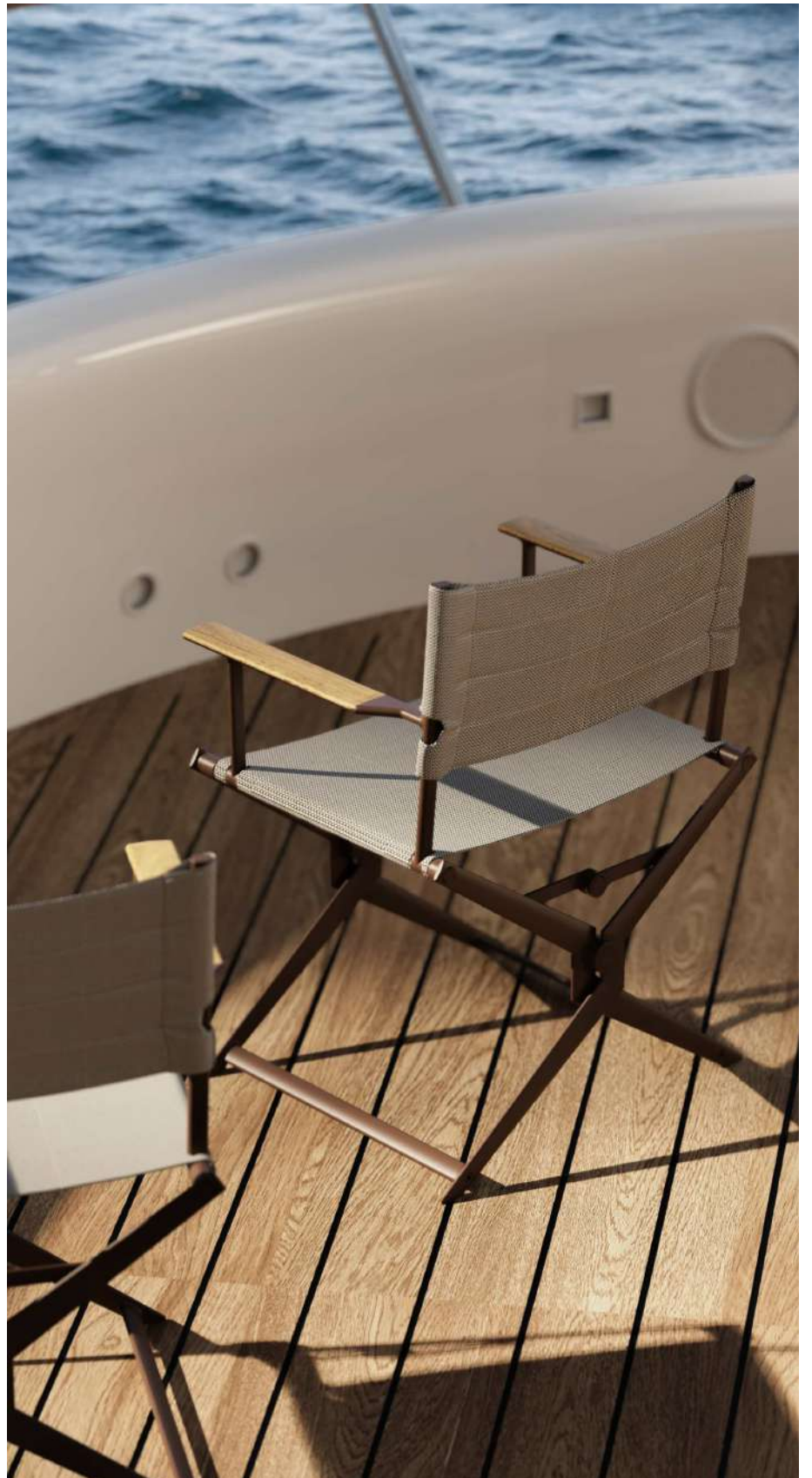


SAYE chair

by angelettiruzza design

SAYE is a modern take on the classic folding director's chair. Its die-cast aluminum frame ensures lightweight durability and outdoor performance, while teak armrests add comfort.

The removable fabric seat and backrest allow easy cleaning and replacement, offering a stylish, space-saving solution.





SAYE stool

by angelettiruzza design

The SAYE stool's foldable design makes it easily transportable and storable. Its die-cast aluminum structure with a smart joint ensures lightness and stability, making it ideal for any yacht.

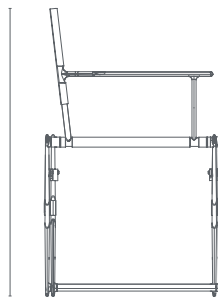




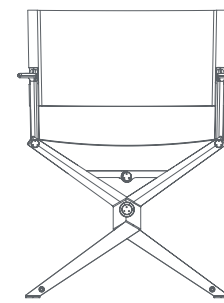
DIMENSIONS



86 / 33³/₄



52 / 20¹/₂



48 / 19

66 / 26

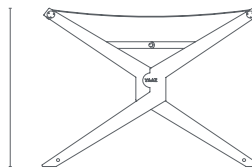
DIMENSIONS

product cm / inch: w. 66 / 26 d. 52 / 20¹/₂ h. 86 / 33³/₄
weight: 8 kg / 17,6 lbs

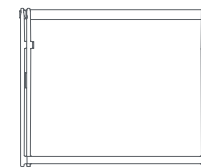
MATERIAL: Aluminum- 20 colors available, SF Sling*
*only Serge Ferrari sling fabric is used - 4 colors available



47,5 / 18³/₄



64 / 25¹/₄



53 / 20³/₄

DIMENSIONS

product cm / inch: w. 64 / 25¹/₄ d. 53 / 20³/₄ h. 47,5 / 18³/₄
weight: 5 kg / 11,0 lbs

MATERIAL: Aluminum- 20 colors available, SF Sling*
*only Serge Ferrari sling fabric is used - 4 colors available



ANKA sunbed

by YAAZ Lab

ANKA is a sunbed that can be easily moved thanks to the large rear wheels.

It is made of aluminum which is a light weight and hard metal with excellent strength-to-weight ratio and corrosion resistance. These properties make it an ideal material for outdoor furniture.

It is also the most popular. Although it is extremely water resistant on its own, it is recommended to add color with polyester electrostatic powder coating.

ANKA is a durable and versatile crib with large rear wheels for easy movement. Made of corrosion-resistant aluminum with a water-resistant polyester powder coating, it ensures long-lasting outdoor performance.

Available in various colors for customizable style.





DESIGNER

YAAZlab

YAAZ Lab is a workshop where creative processes are shaped freely, where design meets function and aesthetics.

This space, which came to life with the collective vision of the YAAZ team, transforms the intimate relationship established with the material into unique collections by blending it with craftsmanship and innovation. Every detail is meticulously designed to enrich the user experience and add character to the spaces.

YAAZ Lab signature designs offer a contemporary perspective for those looking for a balanced harmony between form and function.

ANKA

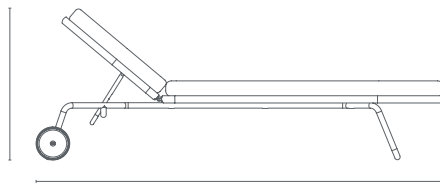
SUNBED



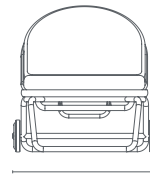
DIMENSIONS



81 / 32



222 / 87¹/₂



83 / 32³/₄

DIMENSIONS

product cm / inch: w. **222** / 87¹/₂ d. **83** / 32³/₄ h. **43,5** / 17¹/₄
weight: **43,2 kg** / 95,2 lbs

MATERIAL: Aluminum and Stainless Steel - 20 colors available, Fabric, Foam



DESIGNER

PATRICK norguet

"The elegance of a product lies in the quality of its details. At ORAK, we designed a family of umbrellas that not only fulfill their basic function but also enrich outdoor spaces. The parabolic form, which doesn't intrude on the space, achieves a balanced appearance thanks to the attention to detail. The color and material choices were designed to offer a wide range of harmonious combinations to suit different spaces," explains Patrick Norguet.



ORAK

para sol

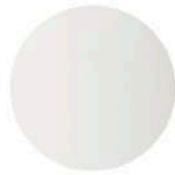




copper brown



light beige



oyster white



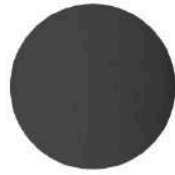
terra brown



beige pink



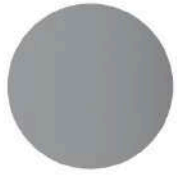
agate grey



black



dark beige



tele grey



toffee



beige grey



pastel turquoise



olive green



grey blue



cement grey



red brown



graphite grey



moss grey



misty



bronza

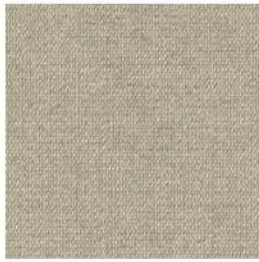


crema

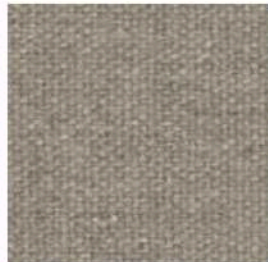
The ORAK frame is made of aluminum.

Color combinations are selected from YAAZ's rich color collection.

ALUMINIUM



PAPYRUS
HER 18006 140



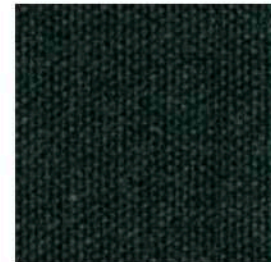
ASH
HER 18001 140



MOSS
HER 18012 140



LEAF
HER 18011 140



ALPINE
HER 18018 140



SLATE
HER 18015 140



SKY
HER 18016 140

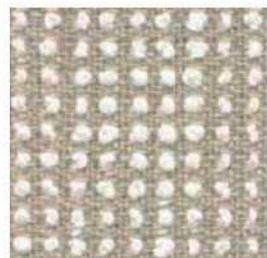


RUST
HER 18021 140



DUNA
HER 18024 140

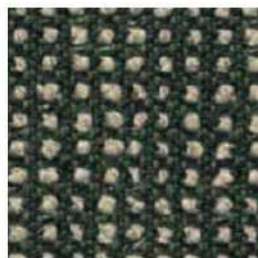
NEW



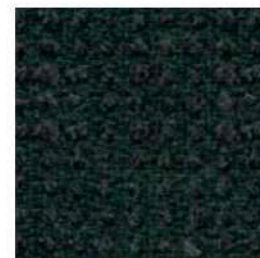
FARAFRA
SLO 19101 140



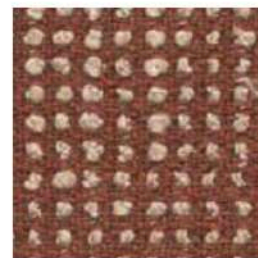
SPIREA
SLO 19107 140



FERN
SLO 19106 140



FOREST
SLO 19104 140

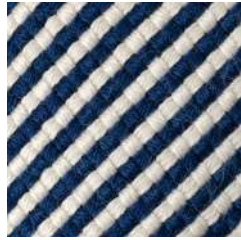


ALEZAN
SLO 19103 140

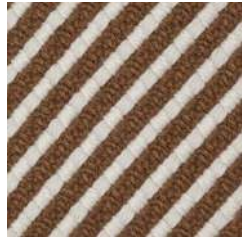


ORAK fabrics are selected from
the **Sunbrella** collection,
which is specially produced for
outdoor use.

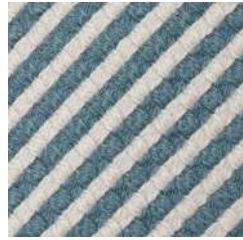
FABBRIC



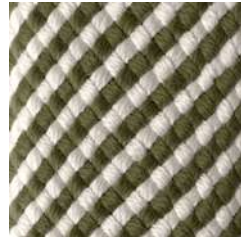
444-853



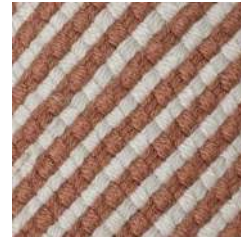
14-853



1102-853



1002-853



1037-853

ROPE



**The accessories used in the opening/
closing sections of ORAK consist of:**
Combinations selected from the YAAZ
Rope collection.

PRIME:
Aluminium+Concrete



URBAN:
Stainless Steel



ETHNIC:
Aluminium+Concrete+Natural Ceramic

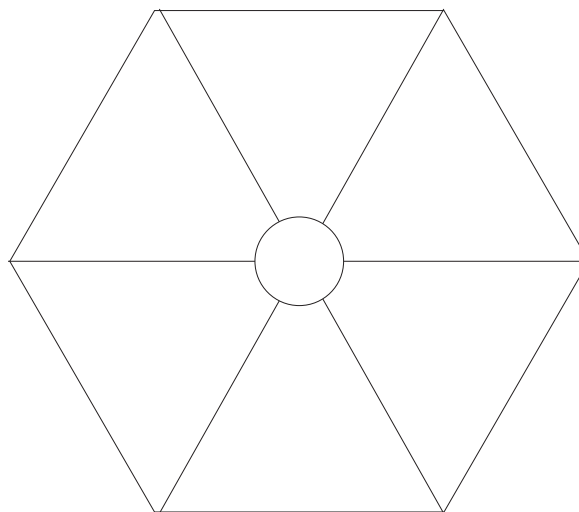
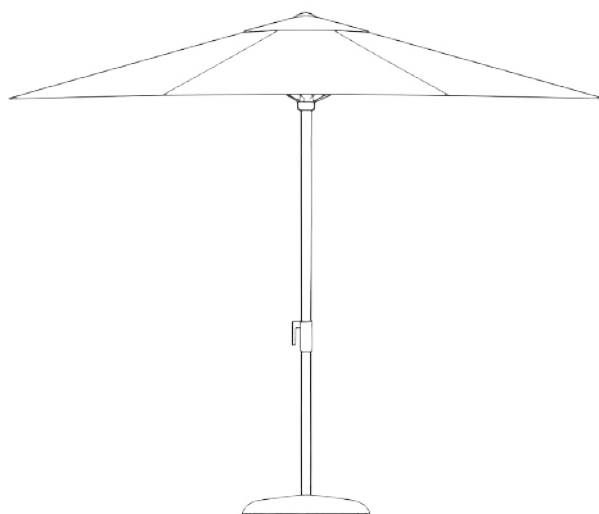


Designed with 3 types leg options,

ORAK reflects the collaboration of functionality and harmony in any space.

DIMENSIONS

ORAK is designed in **3 different sizes.**



ORAK.22.220

cm / inch: w. **220** / 86^{1/2} d. **220** / 86^{1/2} h. **240** / 94^{1/2}

ORAK.22.240

cm / inch: w. **240** / 94^{1/2} d. **240** / 94^{1/2} h. **240** / 94^{1/2}

ORAK.22.310

cm / inch: w. **310** / 122 d. **310** / 122 h. **240** / 94^{1/2}



HUMA sunbed

by YAAZ Lab

Designed by YAAZ Lab, this contemporary sun lounger combines a lightweight yet durable aluminum frame with refined comfort.

Its adjustable backrest and integrated headrest provide exceptional relaxation, while teak wood details add warmth and a timeless touch to the design. Created for both elegance and functionality in outdoor living.





DESIGNER

YAAZlab

YAAZ Lab is a workshop where creative processes are shaped freely, where design meets function and aesthetics.

This space, which came to life with the collective vision of the YAAZ team, transforms the intimate relationship established with the material into unique collections by blending it with craftsmanship and innovation. Every detail is meticulously designed to enrich the user experience and add character to the spaces.

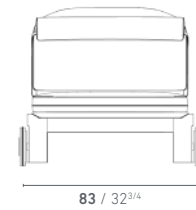
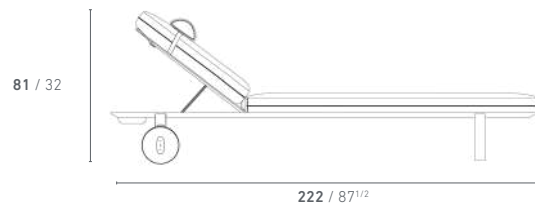
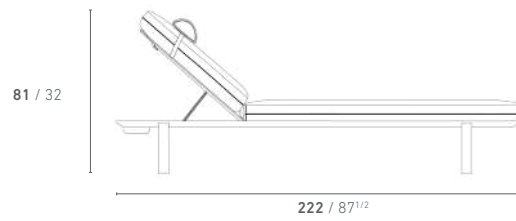
YAAZ Lab signature designs offer a contemporary perspective for those looking for a balanced harmony between form and function.

HUMA

sunbed



DIMENSIONS



DIMENSIONS

product cm / inch: w. 222 / 87¹/₂ d. 83 / 32³/₄ h. 43,5 / 17¹/₄
weight: 43,2 kg / 95,2 lbs

MATERIAL: Aluminum and Stainless Steel - 20 colors available, Fabric, Foam



SWEET cushion & blanket

by @violanellaiuola

The imagination sees.

SWEET furnishing accessories are much more than a pillow and a blanket joined together. They represent the care and love that YAAZ has towards its audience and the desire to offer them beauty at 360 degrees.

Designed by @violanellaiuola, a young Italian fashion designer, they are a concentration of beauty and functionality, a real work of art that captures the imagination for its explosive creativity.

What we find represented in SWEET is a fantastic world, where female creatures live in symbiosis with nature, there is no form of separation, and a harmonious and fluid understanding is celebrated.





SWEET is designed in **5 different colors.**



SWEET

cushion & blanket



DIMENSIONS



DIMENSIONS

product cm / inch: w. 52 / 20^{1/2} d. 3 / 1^{1/4} h. 43 / 17
weight: 43,2 kg / 95,2 lbs

MATERIAL: Fabric, Foam



YUNN carpet

by angelettiruzza design

YAAZ Rope, used in YUNN carpets, is a sustainably produced material that requires no water.

Available in six sizes and five models, it provides thermal insulation, abrasion resistance, and minimal water absorption. Its high antibacterial properties prevent odors, and it is safe for the skin, making YUNN both comfortable and durable.





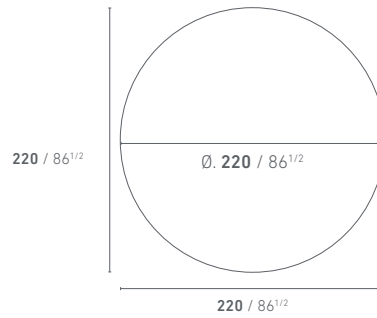
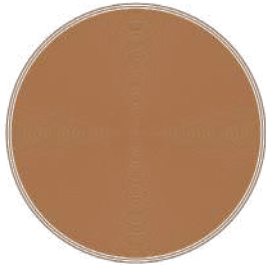
YUNN


carpet



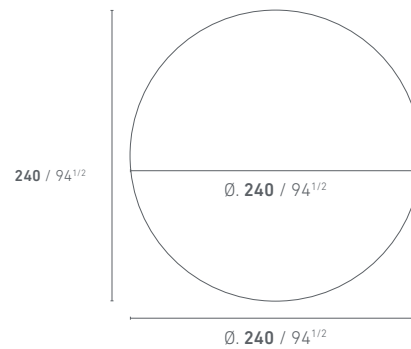
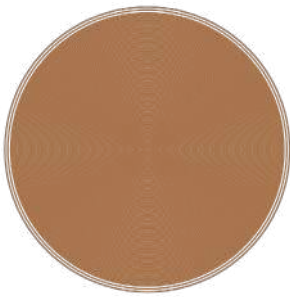
DIMENSIONS

Yunn.52.R220



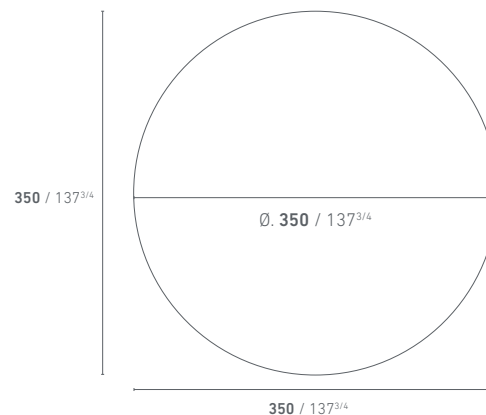
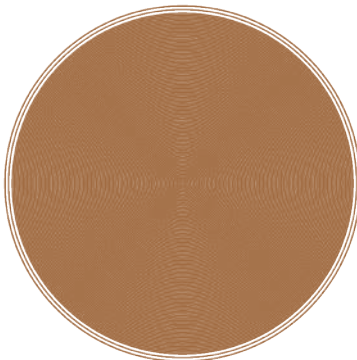
 DIMENSIONS
product cm / inch: Ø. 220 / 86^{1/2}

Yunn.52.R240



DIMENSIONS
product cm / inch: Ø. 240 / 94^{1/2}

Yunn.52.R350






 DIMENSIONS
product cm / inch: Ø. 350 / 137^{3/4}

Yunn.52.R350.T

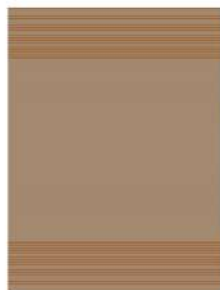


Teak Carpet

-  natural teak
-  dark teak
-  white teak

 DIMENSIONS
product cm / inch: Ø. 350 / 137^{3/4}

Yunn.52.240x320

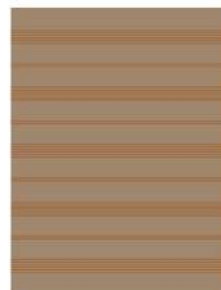


Mod.2



320 / 126

240 / 94¹/₂



Mod.3



Mod.4



Mod.5



DIMENSIONS

product cm / inch: w. 240 / 94¹/₂ h. 320 / 126

PRICE €4.324

Yunn.52.230x360

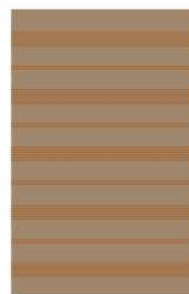


Mod.2



360 / 141³/₄

230 / 90¹/₂



Mod.3



Mod.4

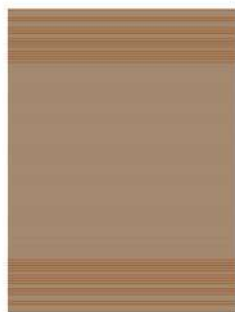


DIMENSIONS

product cm / inch: w. 230 / 90¹/₂ h. 360 / 141³/₄

PRICE €4.701

Yunn.52.300x400

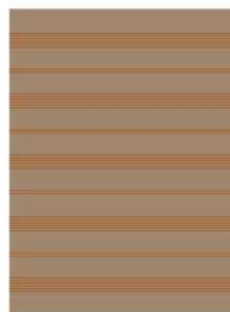


Mod.2



400 / 157¹/₂

300 / 118



Mod.3



Mod.4



Mod.5



DIMENSIONS

product cm / inch: w. 300 / 118 h. 400 / 157¹/₂

YAAZ

MARINE
collection

yaaz.com