

YAAZ

finishes

The
research
work on
materials
is essential
for
YAAZ.

finishes & moodboards



Quality is important in any environment, but in the outdoors, it becomes a substantial reason for existing in the market. For this reason, we are using the best raw materials because we believe that it is an ethical as well as a sustainable attitude. We have then started to build from these foundations, through a choice of carefully calibrated finishings and color shades, an aspect dedicated to the pursuit of beauty or rather for the sensations of serenity that define research on design that looks out for harmony.

We are inspired by the colors of nature that relax and nourish the need for silence and light and are an infinite source of wellness and rootedness.

black and white emotions



Aluminium

Aluminium is a light and strong metal with excellent strength-to-weight ratio and corrosion resistance. These properties make it an ideal material for outdoor furniture. Despite its light weight, aluminium is durable and is coated with polyester electrostatic powder coating for added protection against knocks and scratches and to add colour to the product. As the powder coating adheres better to the metal, it also makes the product much more resistant to fading. JOTUN and Akzo Nobel branded powder coatings are used in YAAZ aluminium products.

JOTUN powder coatings used in YAAZ products have been tested against high amounts of UV radiation and strong winds. In addition, powder coatings have been tested in some of the hottest, most humid and corrosive environments in the world, such as Southeast Asia and the Middle East.

In YAAZ aluminium products, 7001 series aluminium, which is especially preferred in the defence industry, is used. With its high hardness ratio, it is extremely resistant to all weather conditions (-50 / +50) and the effects of sand, dust and sea salt.

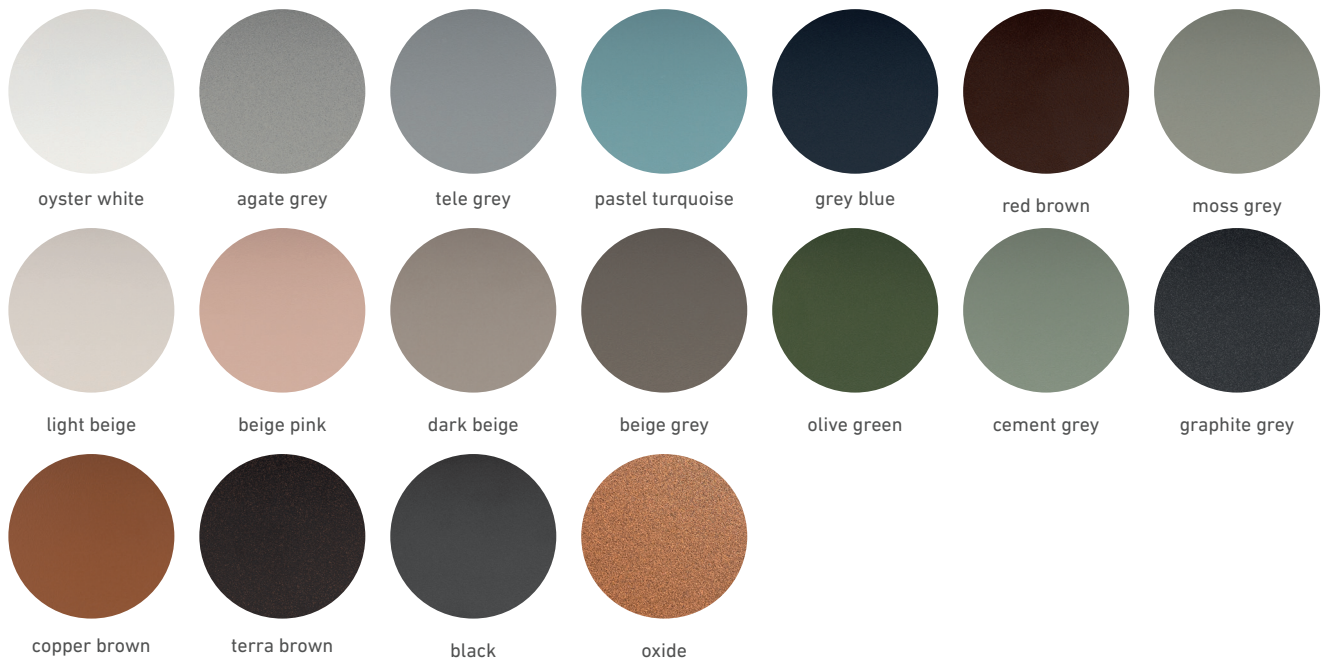
As with other metals, aluminium can heat up or cool down depending on weather conditions, so it is recommended to use with a cushion for comfort.

Standard Composition: EN 573-3

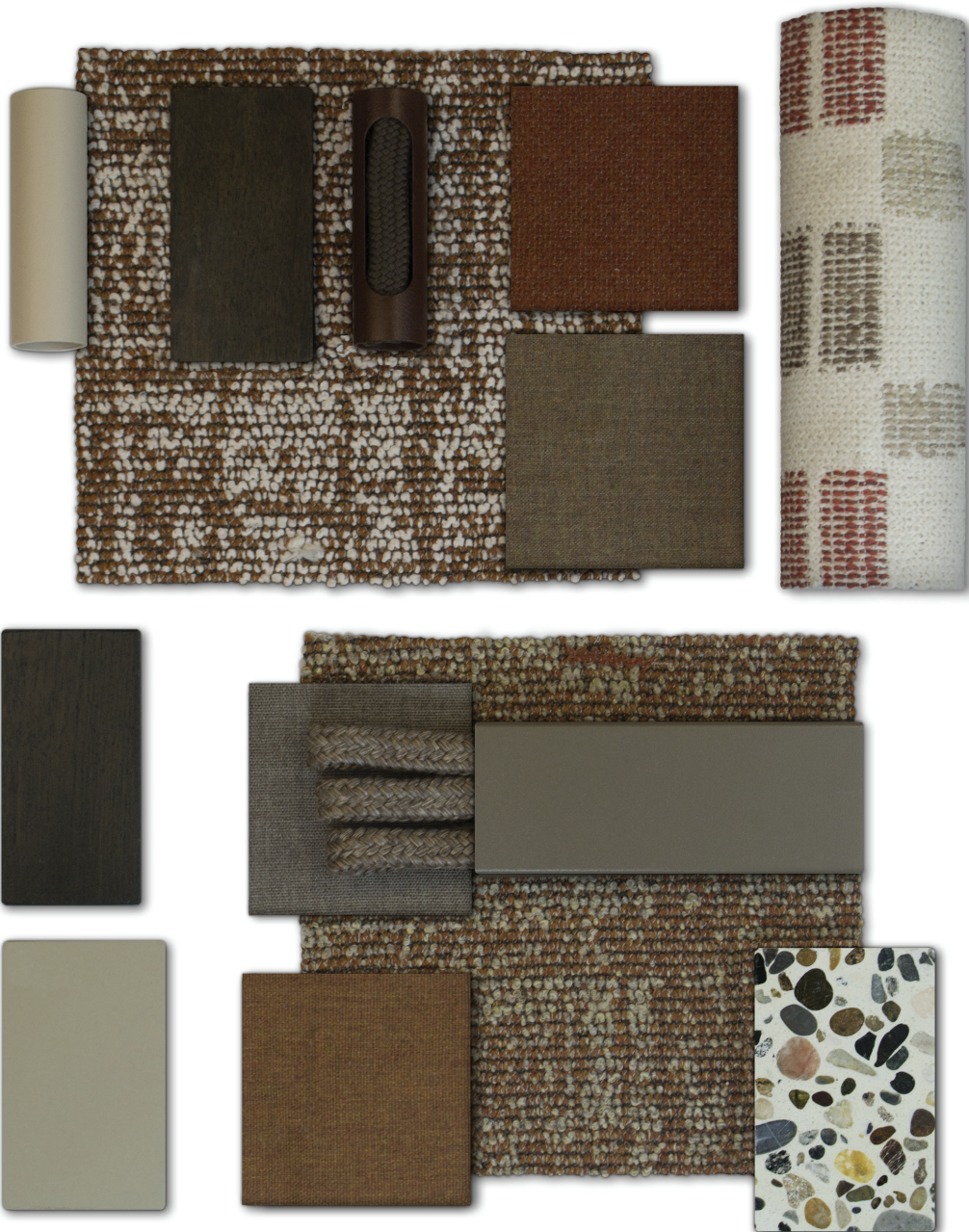
Standard Properties: EN 755-2

Cleaning and Handling Instructions

For regular cleaning, wipe aluminium furniture with a soft cloth or sponge and a mild detergent solution. Avoid using steel wool or abrasive cleaners as they may scratch the aluminium surface. Rinse the furniture thoroughly with clean water and dry with a clean, dry cloth. To avoid damages such as dents and scratches on the surface of the product, use aluminium polish.



a warm colour life



YAAZ Rope

We have created a vibrant collection using our YAAZ ROPES.

YAAZ ropes are produced from raw materials with OEKO-TEX, SGS and UKAS International quality certificates, with proven strength, high resistance to all weather conditions and UV colour fastness.

Our design team has carefully selected and produced a colour palette that can be easily combined with our aluminium frame colours.

* Outdoor furniture ropes made of durable acrylic-based raw materials provide superior protection against the sun's harmful rays and harsh weather conditions

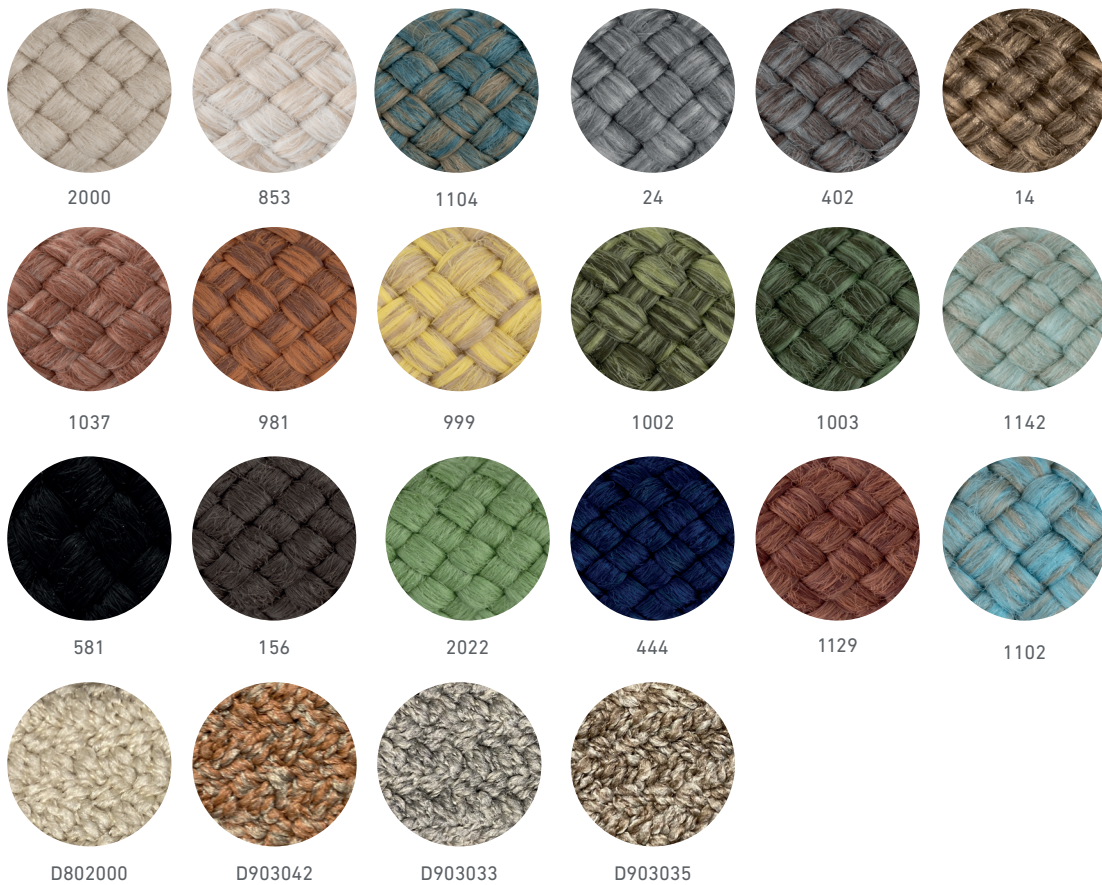
* The UV resistance and color fastness of the used products are regularly tested in accordance with ISO 105-B04 standards.

* With a wide range of colors, outdoor furniture threads perfectly cater to your design needs.

Cleaning and Using Instructions

Dust the rope furniture regularly with a soft cloth or soft sponge to remove light dirt or debris. For deeper cleaning, gently clean the rope with a solution of white soap and warm water using a soft sponge. Then rinse thoroughly with clean water. Harsh chemicals can damage the rope and cause discolouration. Do not use. After cleaning, allow the furniture to dry completely before using it again.

Avoid placing heavy objects on the furniture and do not put weight on the drawstring parts of the furniture to avoid rope sagging. Avoid dragging or scraping the furniture on hard surfaces as this may damage the rope and frame. Avoid using the furniture in weather conditions such as heavy rain or high winds as this will prolong its life. To prolong the service life of the furniture, store it under protective YAAZ cover when not in use.



sweetly joyful



Teak

Teak wood is particularly well suited for outdoor use due to its durability, robustness and strength. The natural teak blocks we import from Myanmar are processed in our factory for all stages until they become products.

Cleaning and Using Instructions

General:

Moisture, wind and heat can cause small cracks in the teak material, causing it to collapse. These should be considered the natural behaviour of a "living" material. Their appearance and duration depends on the humidity level in the air. Cracks that can occur when the wood dries quickly tend to close when the humidity level increases. Dark spots or streaks are caused by the moisture contained in the wood. The appearance of teak wood will tend to even out during the first few weeks outdoors. Continuous exposure to atmospheric conditions causes superficial oxidation (1-2 mm) of the wood, which manifests itself in the characteristic silver-grey colour. This does not affect the underlying structure and does not change its resistance to external factors. In the first weeks of outdoor use and with the first rains, the wood may release red pigment due to its natural characteristics or micro-residues from processing; in such a case it is recommended to wash the floor immediately with products suitable for the surface. In very humid conditions, teak wood may release a reddish-coloured oil and stains may appear on the surface. These stains can be treated as follows: For normal cleaning of the wood, use a soft cloth (not microfibre), water and a non-chemical cleaning agent. In case of deep and difficult to remove stains, it is recommended to sand the surface evenly and polish it with a special product for the restoration of outdoor wooden furniture. This type of restoration product should not be used more than once a year. To prevent oxidation of the product surface, it is recommended to apply a nourishing and protective oil to the surface. To remove the grey patina caused by oxidation and restore the original colour of the teak, use a special product for the restoration of outdoor wooden furniture every 2/3 years. After this process, wash the product with a non-chemical detergent and after drying, apply an impregnating agent specially made for outdoor wood. Do not use wire brushes, abrasive products, bleach, acids and aggressive chemical solvents. Do not use pressure cleaners at close range or at high temperatures.

1. For regular cleaning, wipe teak furniture with a soft cloth or sponge and a mild detergent solution.
2. To remove stubborn stains or accumulated dirt, use a teak cleaner or a mixture of vinegar and water. Apply the solution to the furniture with a soft-bristled brush, then rinse thoroughly with clean water.
3. Allow the furniture to dry completely before reuse.
4. To preserve the natural colour of teak wood, apply teak preservative or teak oil once or twice a year. This will help protect the wood from the elements and prevent it from turning grey.

Using the guidelines:

1. Do not place hot objects directly on teak furniture as this can cause heat marks or discolouration.
2. Avoid placing heavy objects on the furniture as this can cause it to warp or crack over time.
3. Do not drag furniture over rough or uneven surfaces as this can scratch or damage the wood.
4. If possible, store the furniture indoors or under the YAAZ protective cover when not in use to prolong its useful life.

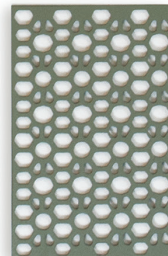
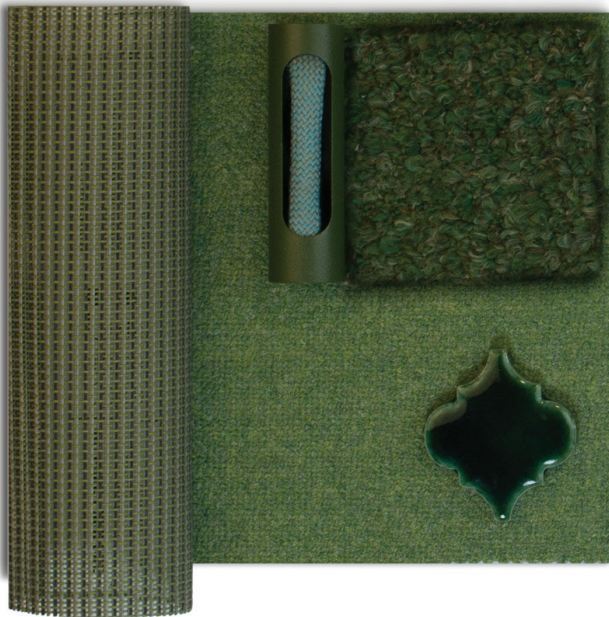
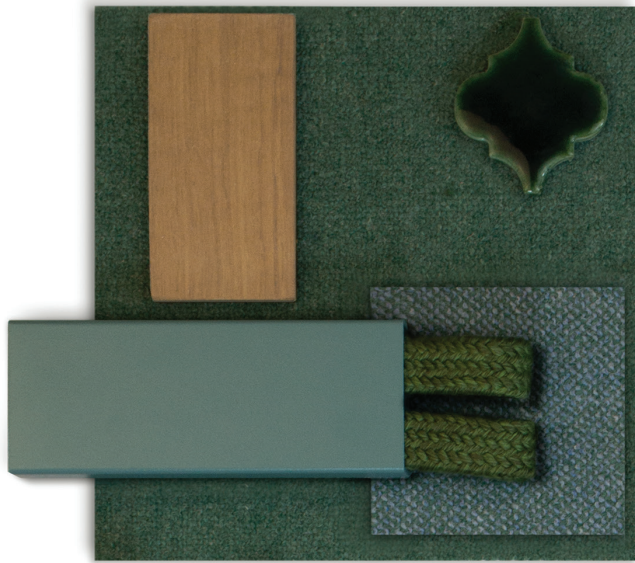


light teak



dark teak

deep breath



Ment

High-strength terrazzo plates produced with the highest quality natural stones.

A first-class appearance is obtained with homogeneous color and aggregate distribution on large surfaces.

Ment plates provide wide possibilities for different designs in spaces with the resistance to color fading and unlimited color and a wide variety of dimensions, especially for outdoor use.

In terms of sustainability, the water used in Ment production is recycled and recycled again. Precast is made of natural aggregates. It provides heat and energy saving with its long-term thermal heat retention and slow release feature in the areas where it is used.

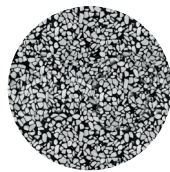
In Yaaz Ment products, epoxy synthetic resin is used as "binder" instead of cement. Therefore, it is not easily stained in daily use.

Cleaning and Using Instructions

For daily cleaning, simply wiping with a clean, damp cloth is sufficient to keep dirt and grit off the surface.

When not cleaned regularly, sand and soil residues that can accumulate on outdoor ment products act as abrasives and damage the surface.

Use only neutral liquid cleaners (meaning neither acid nor alkaline ones). For best results, use a commercial cleaner made specifically for terrazzo. All-purpose household cleaners, soaps, detergents and wax cleaners usually contain one or more alkali and therefore should not be used on ment.



ment 1



ment 2



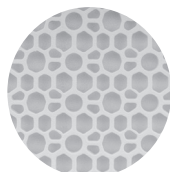
ment 3

Perforated Sheet

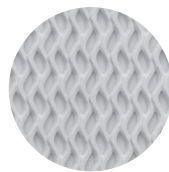
Our perforated sheets made of aluminium are shaped by CNC machines in our factory with patterns specially designed for YAAZ.

Cleaning and Handling Instructions

For regular cleaning, wipe aluminium furniture with a soft cloth or sponge and a mild detergent solution. Avoid using steel wool or abrasive cleaners as they may scratch the aluminium surface. Rinse the furniture thoroughly with clean water and dry with a clean, dry cloth. To avoid damages such as dents and scratches on the surface of the product, use aluminium polish.



model lace



model suntech

spice rose



Zero - HPL

Superior features of ZERO PST surface technology;

- Does not leave fingerprints.
- Ultra matt surface is soft touch.
- Light reflection is very low thanks to its ultra colour intensity.
- Easy to clean.
- Resistant to household and laboratory chemicals.
- Provides safe food contact due to its anti-bacterial properties.
- It has high heat resistance with temperature / cold resistance.
- It is long-lasting thanks to its micro-scratch, impact and abrasion resistance, thermal improvement repair, flame retardant and water repellent properties.
- Reinforced with pine organic polymer (lignin), ZERO-HPL has an elegant appearance and is extremely hard.

Due to all these superior properties, it is especially ideal for outdoor applications.

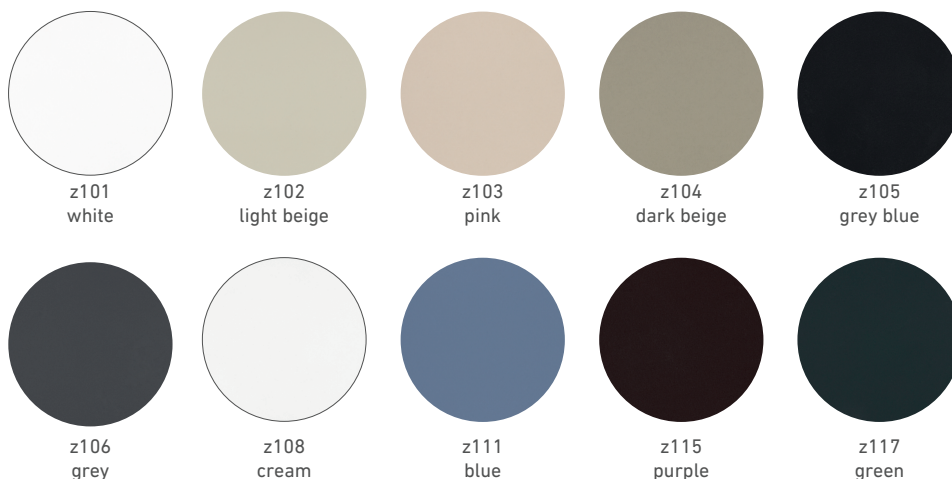
Lignin: A complex organic polymer that accumulates in the cell walls of many plants, making them tough and woody.

Cleaning and Using Instructions

Cleaning Agents that should not be used: Abrasive scrubbing liquid, Abrasive scrubbing solid, Stealwool, Abrasive sponge, cleaning agents with low acidic value, cleaning agents with high alkali value.

As the surface of Z-Pact acquire low light reflectivity, the use of any cleaning materials that contain abrasivesubstances and/or cleaning agents that contain low acidic value or high alkali value, might damage the surfacepermanently.

1. Clean the surface of the product with a suitable cleaning liquid, which must be poured onto a damp, non-abrasive cloth.
2. Wait 5 minutes after cleaning (the cleaning fluid should not remain on the surface of the panels for more than 30 minutes).
3. Then wipe the surface with a clean cloth and make sure that no residue of cleaning liquid remains on the surface.
4. YAAZ will not accept liability for possible damage caused by improper use of the cleaning fluid or the cleaning procedure.
5. The instructions for use of the cleaning materials used are the responsibility of the user.



sky and see



Porcelain

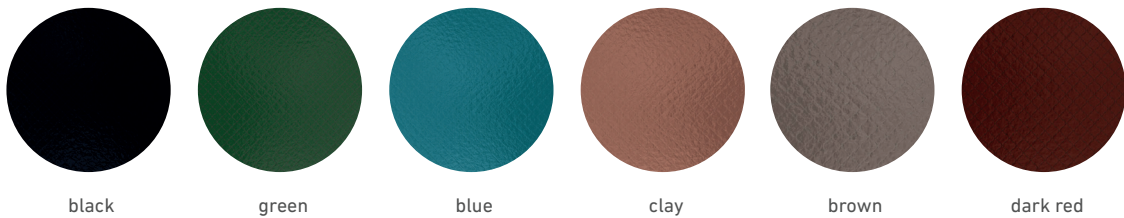
Porcelain, which is among the ceramic types, gains superiority as the most valuable product of your space thanks to its durability, special compactness and resistance to external factors.

Its integrity with the glaze shows resistance to staining. This material is extremely resistant to chemical-atmospheric substances, and since it is baked at high temperature, it is extremely resistant to frost and temperature with its water repellent feature. It is a long-lasting outdoor material in terms of high resistance to abrasion and staining.

Cleaning and Using Instructions

Since it is a water repellent material, it will not be subject to any staining. It is sufficient to wipe any liquid spilled on the surface with a clean and soft cloth.

Since porcelain products are completely handmade, the slight crack appearance that will occur over time is natural and is not considered a defect.



Band - Strap

The straps we use in the UZ collection are specially designed with YAAZ ROPE raw material and production method. The colours chosen are determined by colour engineers to match the wood and fabric collections.

The straps we use in the Monte collection are flexible straps produced by Sunbrella and are under the assurance of Sunbrella. The selected colours were determined by colour engineers to match the wood and fabric collections.

Cleaning and Using Instructions

Dust the rope furniture regularly with a soft cloth or soft sponge to remove light dirt or debris. For deeper cleaning, gently clean the rope with a solution of white soap and warm water using a soft sponge. Then rinse thoroughly with clean water. Harsh chemicals can damage the rope and cause discolouration. Do not use. After cleaning, allow the furniture to dry completely before using it again.

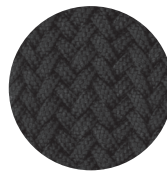
Avoid placing heavy objects on the furniture and do not put weight on the drawstring parts of the furniture to avoid rope sagging. Avoid dragging or scraping the furniture on hard surfaces as this may damage the rope and frame. Avoid using the furniture in weather conditions such as heavy rain or high winds as this will prolong its life. To prolong the service life of the furniture, store it under protective YAAZ cover when not in use.



grey



beige



black



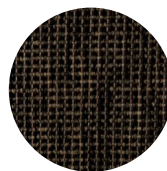
green



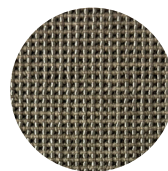
antique beige



cadet



charcoal bled



medium natural

YAAZ carefully studies every detail of its products, from design to production, characterized by advanced technology using raw materials and machinery of the highest quality.



we
handle
production
with
care.

seduction of the desert





fabrics

-  Bleach cleanable
-  Breathable comfort
-  Mold / mildew resistant
-  Water & stain resistant
-  Sun protection
-  UV / fade resistant

Sunbrella Fabrics

Outdoor fabrics made of acrylic fibre are strong. They are more resistant to both weather conditions and handling faults such as mould, scuffing and tearing. This is especially important for outdoor upholstery in active residential and commercial applications. Before weaving, the acrylic fabric yarns are solution dyed. This allows the fabric to retain its colour longer, even when exposed to direct sunlight. In addition to water repellency, acrylic fabrics are more breathable than other options, allowing the fabric to stay cooler in hot weather.

Sunbrella acrylic fabrics are considered premium for outdoor textiles.

Especially in terms of UV protection, Sunbrella is long-lasting compared to its counterparts and therefore offers long-term savings.

Traditional dyeing processes only leave color on the surface of fiber, so they easily fade. Sunbrella fibers are saturated to the core with highly UV-stable pigments, making Sunbrella fabrics resistant to fading and the degrading effects of sunlight.

All Sunbrella fabrics are engineered to resist mold and mildew. Should exposure to dirt and debris cause mold and mildew to occur, all Sunbrella fabrics can be easily and safely cleaned with bleach.

Cleaning and Using Instructions

****Please observe the washing instructions label inside the cushion.**

To facilitate the daily care of your Sunbrella fabric:

Remove loose dirt with a sponge.

Spray with a cleaning solution of water and mild soap.

Allow the cleaning solution to penetrate the fabric.

Rinse thoroughly until all soap residue is removed and air dry.

Do not use bleach or softeners, as these can damage the fabric and affect its water-resistant properties.

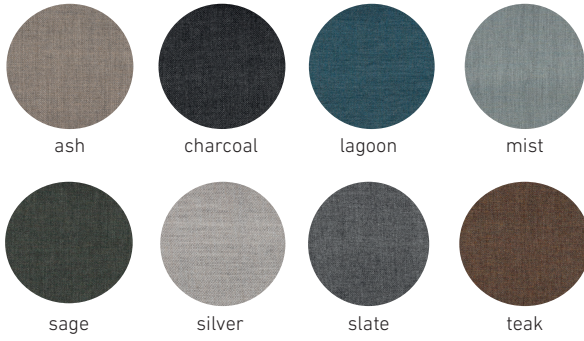
If the fabric gets wet, allow it to dry completely before use to prevent mould growth.

You can machine wash the fabric in cold water on a gentle cycle using a mild detergent.

If ironing is necessary, use a low heat setting and a press cloth to avoid direct contact with the fabric.

Protect furniture with the fabric from inclement weather such as rain, snow and extreme temperatures by storing it under YAAZ covers.

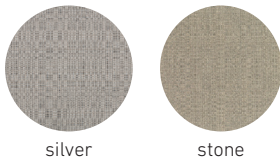
CAST



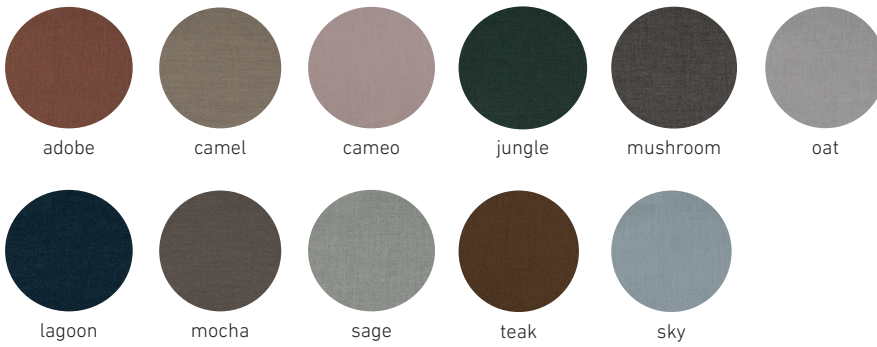
HERITAGE



LINEN



PLAY



YAPA

The YAPA Fabric Collection, specially produced by YAAZ, is durable, long-lasting and easy to maintain. In general, waterproof fabrics are an excellent choice for outdoor use as they also provide protection against all other environmental factors.

Cleaning and Using Instructions

****Please observe the washing instructions label inside the cushion.**

To facilitate the daily care of your YAAZ fabric:

Remove loose dirt with a sponge.

Spray with a cleaning solution of water and mild soap.

Allow the cleaning solution to penetrate the fabric.

Rinse thoroughly until all soap residue is removed and air dry.

Do not use bleach or softeners, as these can damage the fabric and affect its water-resistant properties.

If the fabric gets wet, allow it to dry completely before use to prevent mould growth.

You can machine wash the fabric in cold water on a gentle cycle using a mild detergent.

If ironing is necessary, use a low heat setting and a press cloth to avoid direct contact with the fabric.

Protect furniture with the fabric from inclement weather such as rain, snow and extreme temperatures by storing it under YAAZ covers.

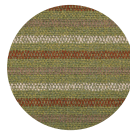
LINE



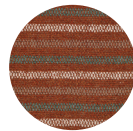
soft blue



soft green



menta



brick

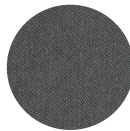
RIA



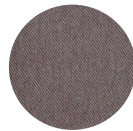
copper



anthracite



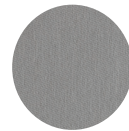
dust



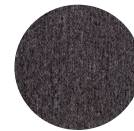
grape



navy



rock



wine

AKS



wine



anthracite

FLOW



VOYAGE



ASTEC



BLOOM



Marine Leather

Marine Leather is a material often used in YAAZ's luxurious and durable furniture designs. Marine Leather stands out with its durable structure, while at the same time offering a comfortable use with its soft texture.

Cleaning and Using Instructions

Mix warm water and mild soap or a specialized cleaner for marine leather surfaces.

To remove stains, use a specially formulated leather cleaner or a lightly dampened cloth.

Moisturize your leather products regularly and care for them with a protective leather cream or polish to maintain the suppleness and shine of the leather.

Avoid exposing the furniture to extreme temperatures, such as direct sunlight or freezing temperatures.

Do not use abrasive materials or harsh chemicals when cleaning the furniture, as they can damage the marine leather.

To prevent scratches or tears, avoid dragging heavy objects across the surface of the furniture.

Consider covering the furniture during prolonged periods of non-use, such as during the winter months or when you are away on vacation.

Regularly inspect the furniture for any signs of damage or wear, and address any issues promptly to prevent further damage.



42950



40606



41942



40605



40430



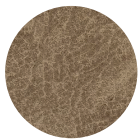
42949



40491



40492



natural

Natural leather is used only as a belt on the head cushion for the Uz Lounge Chair.

Serge Ferrari Sling / Mesh

Fabrics in the Batyline Elios range meet this need for sensorial comfort thanks to a soft touch, a textile look and a contemporary design.

The fabrics' high level of technical performance guarantees the furniture's durability. Batyline Elios, a time tested fabric.

Cleaning and Using Instructions

Brush off any loose dirt or debris from the surface of the fabric using a soft-bristled brush.

Apply a solution of water and mild soap to the fabric with a sponge or soft cloth.

Gently scrub the fabric in a circular motion, taking care not to rub too hard.



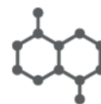
Softness and comfort

The flocked yarn in the weave ensures the fabric's softness and comfort



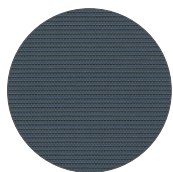
Robust

High - performance Batyline fabric with exceptional abrasion resistance properties (50,000 Martindale test cycles) for cushioning or tensioned installation (sling) applications

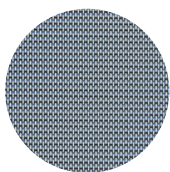


Easy cleaning

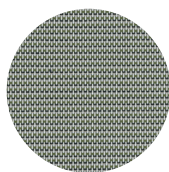
Batyline Elios is an excellent solution for outdoor furniture, combining durability and easy cleaning



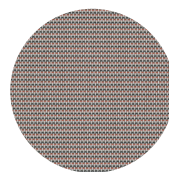
azurite



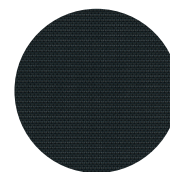
cobalt



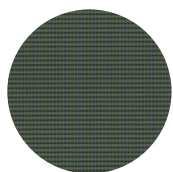
epidote



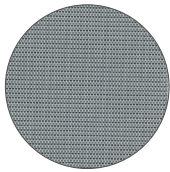
jaspe



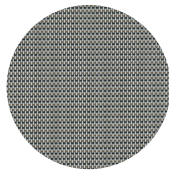
onyx



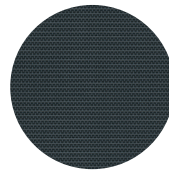
serpentine



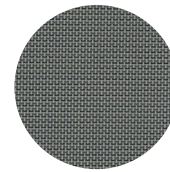
pyrite



smokey
quartz



galaxite



satellite



yaaz.com