

HIGHLIGHTS.2026



YAAZ

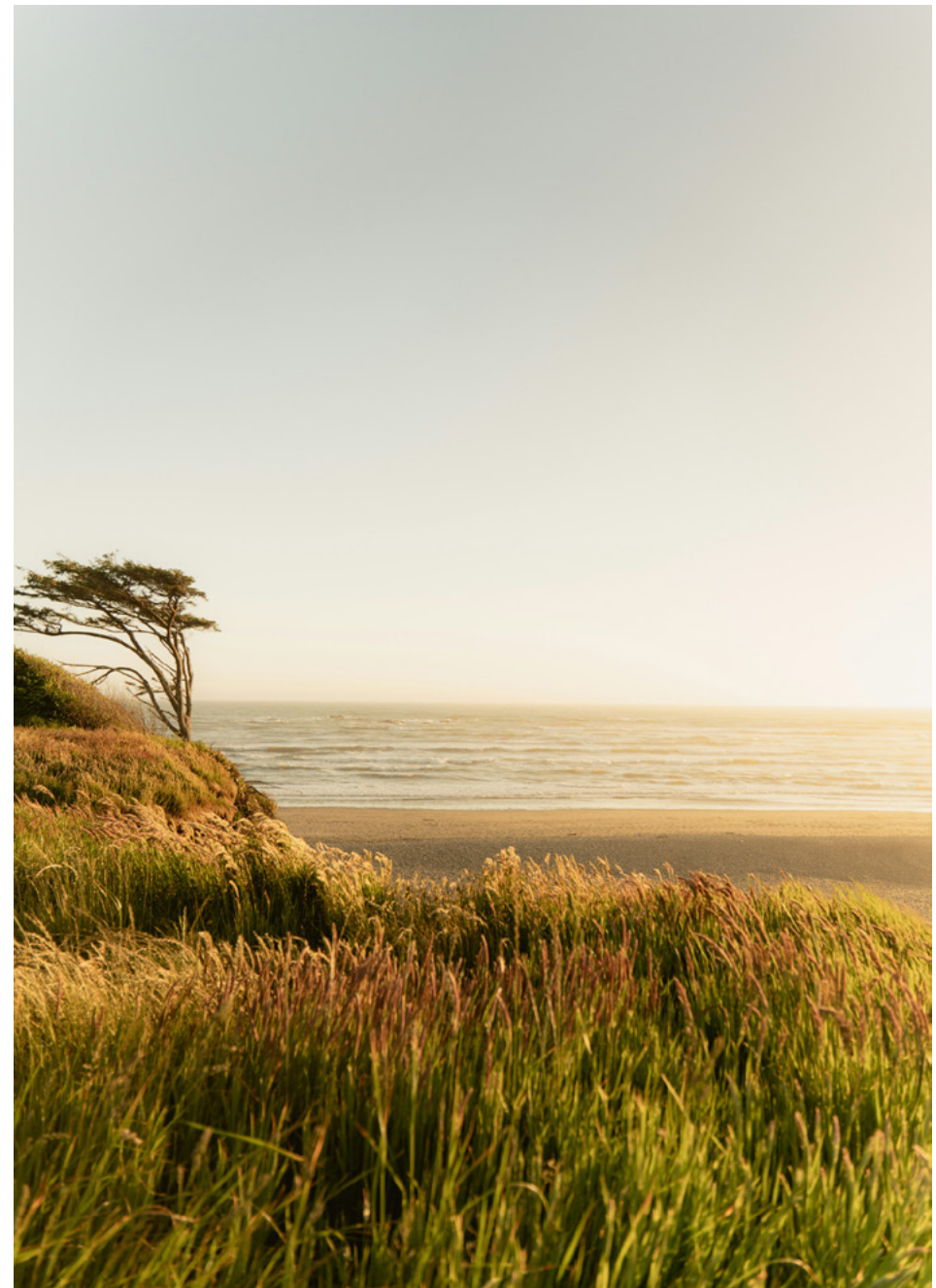
beauty.nature.soul.

**YAAZ**

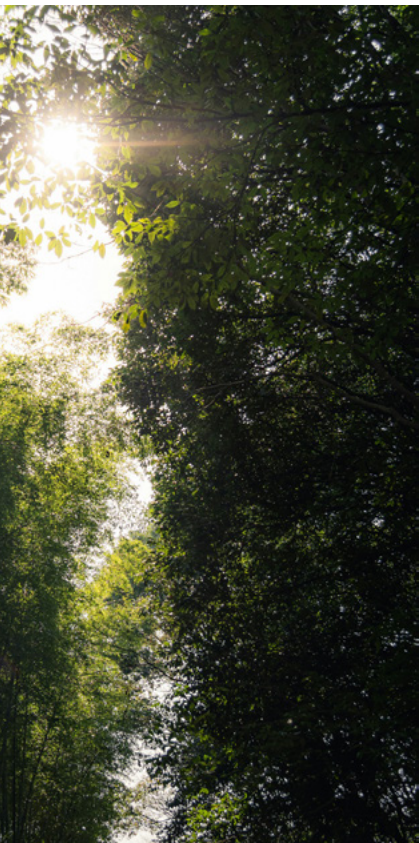
beauty.nature.soul.



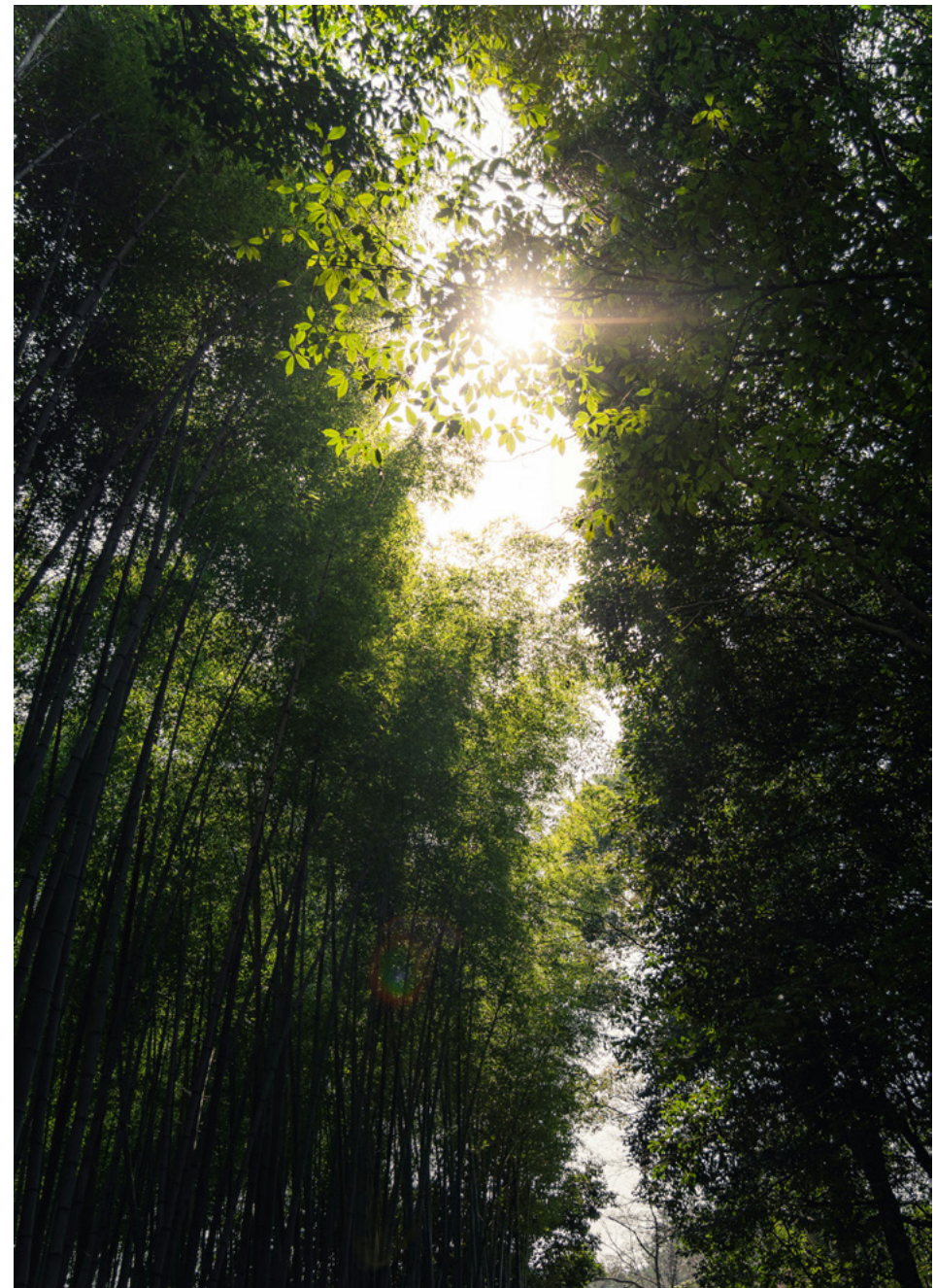
**beauty.** Design is more than just an aesthetic; it is a visual conversation. At YAAZ, beauty is found in the "sophisticated silhouettes" and refined finishes that elevate any patio or terrace. By blending ergonomic comfort with high-end Mediterranean style, every piece becomes a functional sculpture that commands attention without shouting.



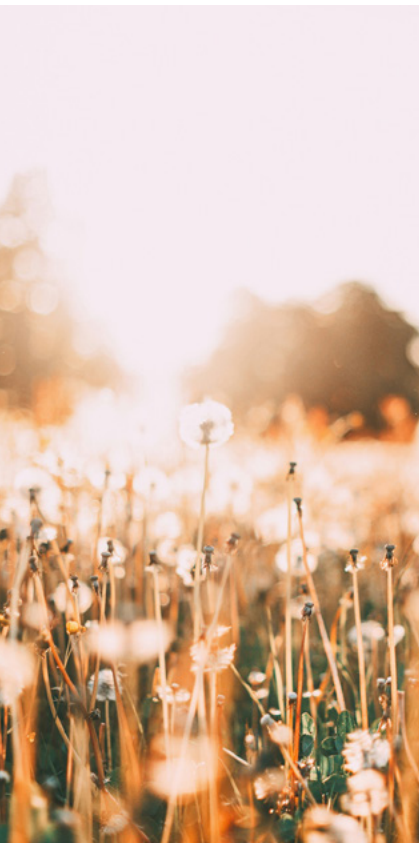
daniel akselrod.



**nature.** Our furniture doesn't just sit in the environment; it honors it. We utilize "sustainable, weather-resistant materials" like premium teak and recyclable alloys that mirror the organic textures of the earth. Whether it's the warmth of the wood or the coolness of the stone, our collections are designed to age gracefully alongside the elements, blurring the line between the built world and the wild.



daniel akselrod.



**soul.** The true essence of outdoor living is the feeling it evokes. "Soul" represents the 'tranquility and connection' found in shared moments under the open sky. It's the breath of fresh air during a morning coffee or the laughter shared over a sunset dinner. We provide the stage; you provide the life, creating an atmosphere where the spirit can truly exhale.



anita austvika.

huma sunbed

YAAZ Lab



p.12



p.54

manle collection

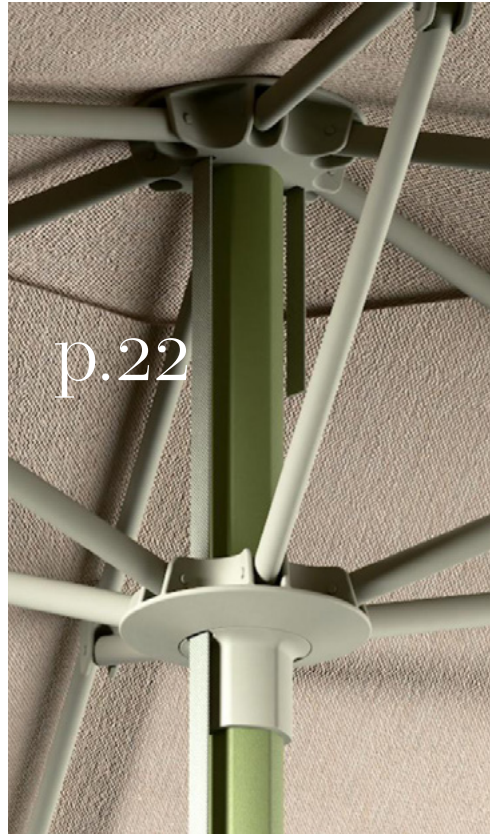
angelettiruzza design



p.60

leaf collection

Seyhan Özdemir Sarper & Sefer Çağlar



p.22

orak parasol

patrick norguet



p.42

lipp collection

patrick norguet

uz deck

angelettiruzza design



p.32

# huma sunbed

Elevate your outdoor lounging experience with the HUMA Sunbed by YAAZ. Combining architectural precision with effortless luxury, the HUMA collection is designed to bridge the gap between high-end aesthetics and functional outdoor living.



designed by YAAZ Lab

The HUMA sunbed is defined by its sleek, minimalist profile and the warmth of premium natural materials. Featuring a sophisticated metal frame paired with rich teak accents, it offers a contemporary silhouette that feels right at home on a sun-drenched deck or a private yacht.



Refined, resilient, and remarkably comfortable the HUMA Sunbed isn't just a piece of furniture;

it's an  
invitation  
to  
slow down.



**Versatile Mobility:** Available in both stationary and wheeled versions, allowing you to chase the sun or find the shade with ease.

**Integrated Functionality:** The thoughtful rear deck includes a recessed wooden storage tray, perfect for keeping personal essentials like phones, sunglasses, or earbuds safe and within reach.

**Adjustable Comfort:** A multi-position backrest, supported by a sturdy stainless-steel mechanism, ensures the perfect angle for reading or napping.

**Premium Detailing:** Luxurious upholstery with elegant piping and leather-strap accents highlights the meticulous craftsmanship YAAZ is known for.

Stylish, functional,  
and naturally beautiful.







# orak parasol

Designed by the renowned Patrick Norguet for YAAZ Outdoor Furniture, the ORAK Parasol is a masterclass in minimalist elegance and functional precision. It reimagines the traditional sunshade as a sculptural element, blending architectural lines with the effortless ease required for luxury outdoor living.



designed by Patrick Norguet





ORAK is  
more  
than a utility;  
it is a  
versatile design  
tool that  
offers  
shade with  
asophisticated,  
modern  
edge.



**Structure:** The entire mechanism is crafted from high-grade aluminum, ensuring it remains lightweight yet exceptionally durable.

**Canopy:** Both the main canopy and the integrated vent sections utilize Sunbrella fabrics, the industry gold standard for UV resistance and weatherproofing.

**Detailing:** The opening mechanism is accented by a choice of 5 distinct cord options from the signature YAAZ Rope collection, adding a soft, artisanal touch to the metallic frame.

**Integrated Vent:** The canopy features a dedicated vent section using Sunbrella fabric to allow for air circulation and increased stability during gusts.

**Minimalist Hub:** Precision-engineered aluminum joints for a clean, "screwless" aesthetic appearance.



ORAK reflects the collaboration of functionality and harmony in any space.



\*Orak Parasol designed with 3 different base options.

YAAZ  
prioritizes  
longevity  
without  
compromising  
on tactile  
beauty.



The ORAK Parasol is defined by its clean, unobtrusive silhouette. One of its most distinctive features is the dual-configuration system, allowing the canopy frame and the primary structure to be colored separately. With a palette of 20 aluminum colors, designers and homeowners can create either a monochromatic, seamless look or a bold, high-contrast statement.

# UZ deck

That is a stunning piece of outdoor furniture. The Uz Deck chair by YAAZ manages to look both architectural and incredibly inviting a rare feat for a foldable chair. The collaboration with Angelettiruzza Design really shines through in those rounded teak joins and the tactile nature of the straps.



designed by Angelettiruzza Design

The Uz Deck chair is the centerpiece of the Uz Collection, characterized by its “soft-minimalist” aesthetic. The designers have focused on the harmony of circular geometries, where every teak component is rounded to create a fluid, organic feel that mimics the natural environment.





Combining the warmth of premium teak with the artisanal texture of woven straps, the Uz Deck chair invites you to slow down and embrace the luxury of a well-designed pause. Whether placed on a sun-drenched terrace or nestled in a lush garden, its timeless silhouette and functional portability redefine what it means to lounge in style.





**Solid Teak Frame:** Utilizes high-grade teak, renowned for its weather resistance and ability to age gracefully into a beautiful silver-grey patina over time.

**Woven Straps:** The seat and backrest feature a wide, flat-weave strap system. This provides ergonomic support that contours to the body while ensuring maximum breathability.

**Tactile Armrests:** A signature detail of the Uz Collection is the rope-wrap on the armrests, providing a comfortable grip and a sophisticated contrast against the smooth wood.







**Folding Mechanism:** Engineered for effortless transitions. The chair folds into a slim profile, making it easy to store or move as the sun shifts across your patio.

**Ergonomic Incline:** The precise angle of the backrest is designed for "active lounging" perfect for reading, conversing, or enjoying a cocktail.

**Outdoor Durability:** Every joint and material has been selected to withstand UV exposure and moisture, making it a permanent fixture for luxury seaside or poolside environments.



# lipp collection

The LIPP Collection, designed by the acclaimed Patrick Norguet for YAAZ, is a masterclass in the dialogue between organic warmth and architectural precision. This expansive outdoor suite comprising dining tables, armchairs, sofas, and versatile sectional pieces redefines the alfresco experience through a lens of refined craftsmanship.



designed by Patrick Norguet

At the heart of LIPP is the use of premium Teak, a material chosen for its enduring strength and natural ability to weather the elements with grace. Norguet elevates this classic timber by pairing it with an intricate weaving language. The collection is characterized by its open-back structures, which are brought to life by the YAAZ Rope collection. With 20 different cord options available, the furniture can be personalized to range from subtle, earthy tones to vibrant, textured statements.



**Architectural Teak Frames:** The solid teak structures feature soft, radiused edges and tapered legs, offering a sturdy yet visual lightness.

**The Art of the Weave:** The signature rope detailing provides both ergonomic support and a play of light and shadow, seamlessly blending the furniture into its natural surroundings.

**Material Harmony:** The juxtaposition of smooth wood, tactile rope, and plush, weather-resistant upholstery creates a sensory-rich outdoor environment.

**Versatility by Design:** From intimate balcony seating to expansive lounge configurations, the modular nature of the LIPP pieces allows for bespoke outdoor layouts.

Whether it is the rhythmic slatted top of the dining table or the deep, inviting cushions of the lounge set, the LIPP collection invites you to slow down and enjoy the art of outdoor living.





## LIPP Sun Lounger

Merging form with mobility, the LIPP Sun Lounger brings a sense of refined leisure to the poolside. It maintains the collection's signature teak construction while introducing clever, functional details.

**Articulated Comfort:** The adjustable backrest allows for multiple reclining positions, from upright reading to full relaxation.

**Signature Wheels:** Large, minimalist teak wheels at the rear provide effortless mobility, allowing you to follow the sun across your deck with ease.

**Textural Contrast:** The woven rope base beneath the cushions provides a subtle "spring" and breathability, ensuring comfort even on the warmest days.





The LIPP Collection represents a sophisticated fusion of architectural precision and organic warmth, reimagining the boundary between indoor comfort and outdoor resilience.



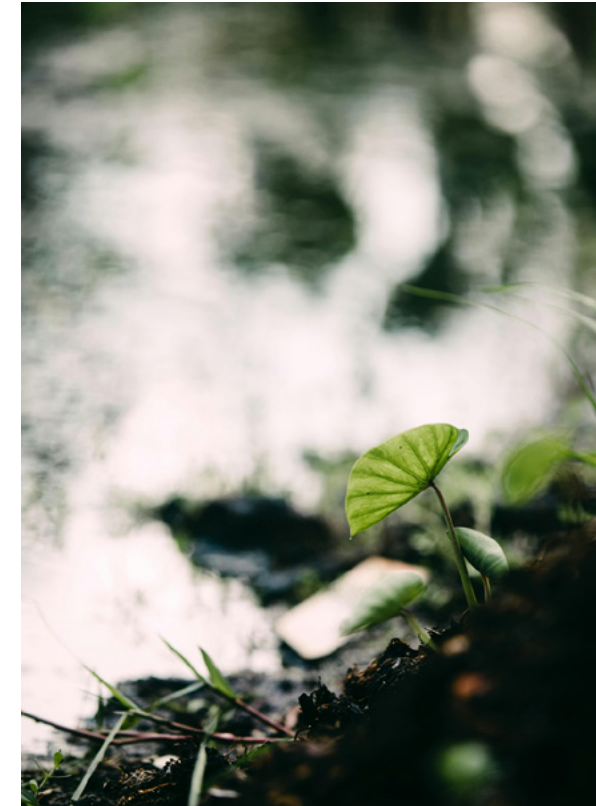
# manle collection

This collection, designed by Italian designers angelettiruzza, is a beautiful blend of Mediterranean warmth and contemporary structural design. It manages to look incredibly soft while maintaining a very “architectural” frame.

Elevate your outdoor or indoor living space with a piece that balances generous comfort with intricate structural detail. The Manle Lounge Chair is designed for those who seek a “sink-in” experience without compromising on sophisticated aesthetics. Its low-profile silhouette and tactile finishes make it a natural centerpiece for any modern sanctuary.



The design centers on the concept of “structured softness.” While the oversized, deep cushions suggest a cloud-like comfort, they are held in place by a rigid, geometric frame that provides a striking visual contrast. The open-weave side panels are inspired by traditional macramé and nautical knotting, creating a rhythmic play of light and shadow. This “exstructure” design ensures the lounge looks beautiful from every angle making it ideal for open-plan layouts.



Every element of the Manle lounge is chosen for its durability and sensory appeal:

**The Frame:** A precision-engineered, powder-coated aluminum base. The teak cross-base pedestal provides rock-solid stability while maintaining a minimalist footprint.

**The Weave:** Hand-tensioned rope and flat-braided bands are meticulously woven through the frame. This isn't just decorative; it provides a flexible yet supportive cradle for the side cushions.

**Comfort Engineering:** Featuring high-resilience foam cores wrapped in soft batting, the cushions are designed to maintain their loft and shape over years of use.



As designers Silvana Angeletti and Daniele Ruzza explain, the project takes shape from this inspiration: the idea of a suspended passage capable of evoking lightness, balance, and continuity between spaces and landscapes.



Manle thus expresses the encounter between advanced industrialization and artisanal expertise, two complementary dimensions that define YAAZ's identity. Technical precision, durability, and innovation intertwine with meticulous craftsmanship, giving rise to a furnishing system capable of establishing an authentic relationship between design, nature, and the quality of living.

# leaf collection

A Symbiosis of Organic Geometry and Timeless Teak.

Drawing inspiration from the complex yet effortless patterns found in the natural world, LEAF is more than a furniture suite it is a philosophical exploration of how we inhabit the space between architecture and the environment.



designed by Seyhan Özdemir Sarper & Sefer Çağlar



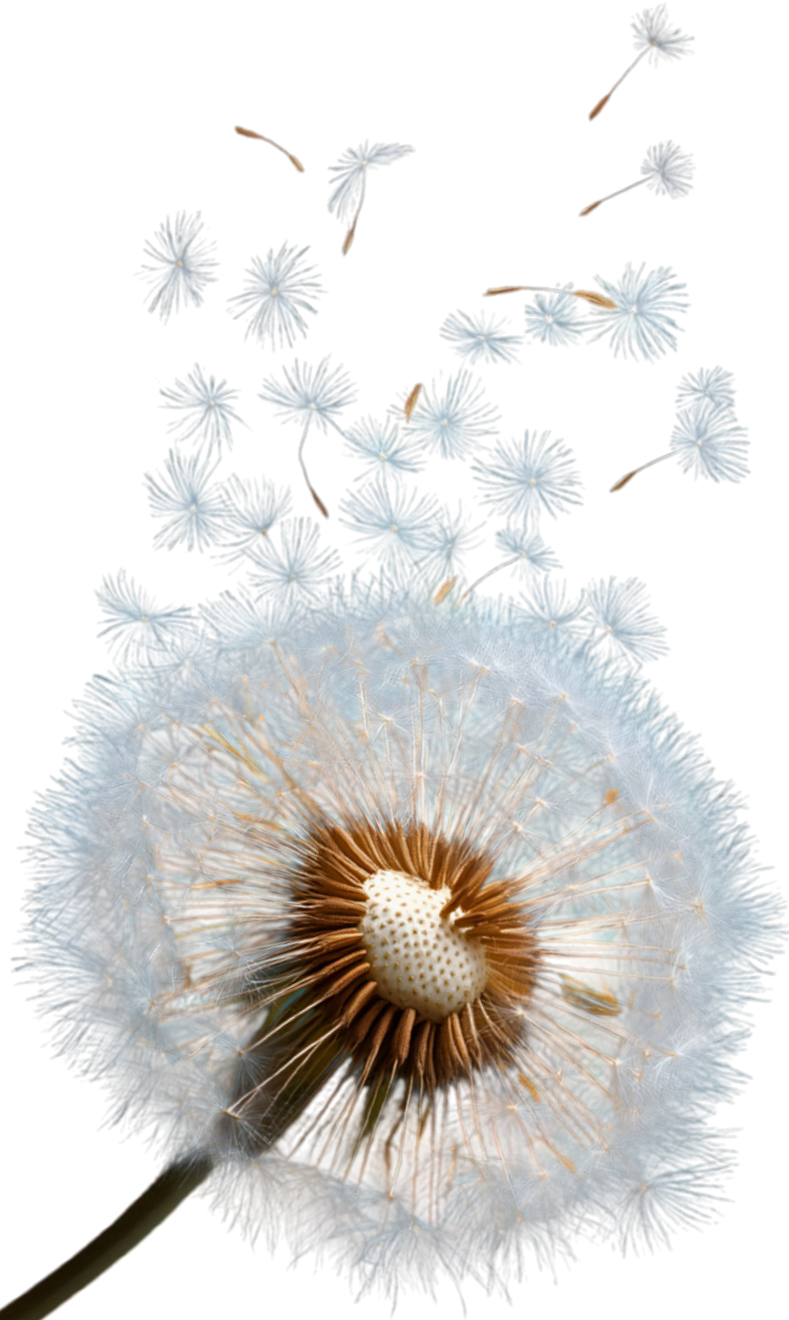
The LEAF Collection is built upon the concept of 'Structured Organicism'. The designers sought to capture the fleeting elegance of a falling leaf the way it balances weightlessness with a defined, sculptural silhouette.



The collection challenges the traditional rigidity of outdoor furniture by utilizing hexagonal and rhythmic geometries. These forms allow the pieces to “grow” within a space, much like foliage covering a forest floor. Whether arranged in a sprawling social configuration or as a solitary statement piece, LEAF adapts to the landscape with an innate, biological logic.



The LEAF Collection offers a comprehensive range of seating including sofas, lounge chairs, and modular coffee tables, providing a versatile toolkit for architects and design enthusiasts to curate their own outdoor narratives.



## We are here!

info@yaaz.com  
support@yaaz.com

Headoffice: Yenibosna İstwest Sit. A1 Blok No:17  
34197 Bahçelievler - İstanbul - Türkiye  
P: +90 (212) 472 22 58

Factory: Karataş Yolu 10.Km. No:832/A 01375  
Yüreğir - Adana - Türkiye  
P: +90 (322) 232 00 43 - 46

The YAAZ brand and logo are registered trademarks.  
YAAZ prohibits the use of its trademarks, logos, domain  
names, and business name without its consent, even in  
countries where they are not registered.  
All rights not expressly granted are reserved.

Graphic Design: YAAZ Lab  
Art Director: Angelettiruzza Design-Italy  
3D Renders: Abdurrahim Karakoç-Abdurrahman Karakoç  
Print: Italy





[yaaz.com](http://yaaz.com)